



**SCENIC
AMERICA**

National Scenic Byways Program: WEST VIRGINIA

About the National Scenic Byways Program

The National Scenic Byways Program, established by Congress in 1991, recognizes historic, scenic, and culturally important roads, all of which promote economic development and tourism in communities around the U.S. There are more than 1,200 byways in all 50 states.

The **West Virginia** State Scenic Highway Program, which began in 1988 with the designation of the Midland Trail as a state scenic highway, predates its national counterpart. West Virginia boasts six national scenic byways; one of them, the Historic National Road, holds the gold standard of roadways as an All-American Road. West Virginia also has 13 state scenic byways that showcase the historical and natural significance of the state.

Key Points

- West Virginia is home to 19 scenic byways, including six national scenic byways and 13 state scenic byways.
- The Coal Heritage Trail is an integral part of the Coal Heritage Area, which generates \$207 million in economic impact, supports nearly 3,000 jobs, and generates \$16.8 million in tax revenue.
- The Coal Heritage Trail also traverses the New River Gorge Bridge, the centerpiece of America's newest national park.
- West Virginia also hosts a portion of the Historic National Road, a multi-state All-American Road which was the nation's first federally funded interstate highway.

19

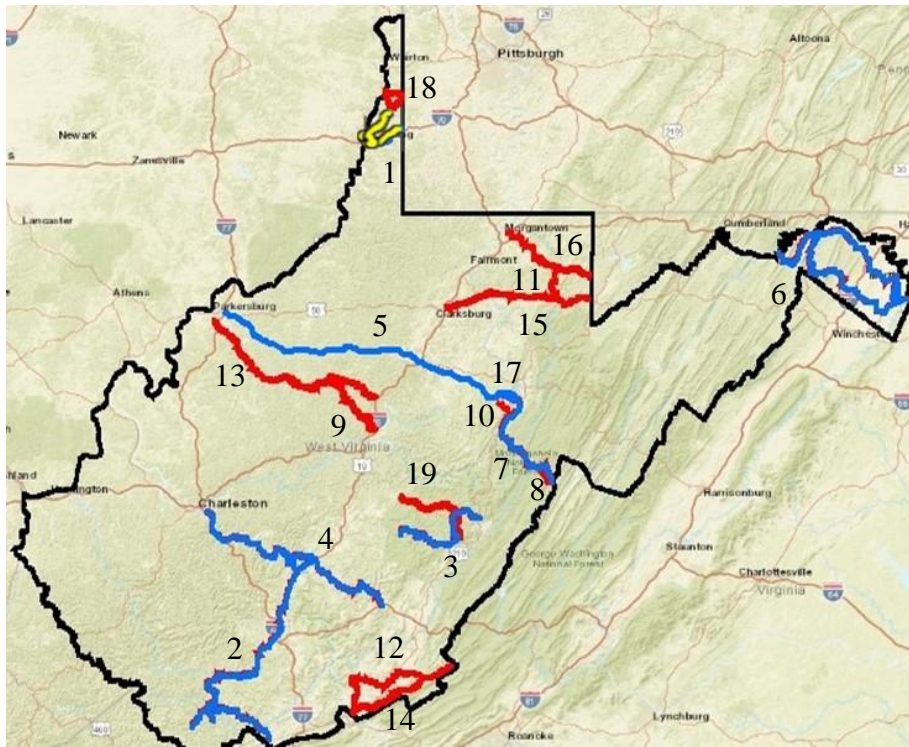
West Virginia is
home to
19 scenic byways



West Virginia Travel Industry Facts

- > Generated \$535 million in tax revenue
- > Supported 45,400 jobs
- > Travelers spent \$4.6 billion

Images: Coal Heritage Trail (top), Highland Scenic Highway credit: Wikimedia Commons (right column)



West Virginia byways provide access to the state's most spectacular public lands including:

- > 1 NATIONAL PARK
- > 29 STATE PARKS
- > 2 NATIONAL RECREATIONAL AREAS
- > 1 NATIONAL FOREST
- > 9 STATE FORESTS

Scenic Byways in West Virginia

ALL-AMERICAN ROADS

1. HISTORIC NATIONAL ROAD

NATIONAL SCENIC BYWAYS

2. COAL HERITAGE TRAIL
3. HIGHLAND SCENIC HIGHWAY
4. STAUNTON-PARKERSBURG TURNPIKE
5. THE MIDLAND TRAIL
6. WASHINGTON HERITAGE TRAIL

STATE SCENIC BYWAYS

7. BACK MOUNTAIN BACKWAY
8. CAMP ALLEGHENY STATE BACKWAY
9. CEDAR CREEK ROAD STATE BACKWAY
10. CHEAT MOUNTAIN STATE BACKWAY
11. CHEAT RIVER STATE BYWAY
12. FARM HERITAGE ROAD
13. LITTLE KANAWHA PARKWAY
14. MOUNTAIN'S SHADOW TRAIL STATE BACKWAY
15. NORTHWESTERN TURNPIKE
16. OLD ROUTE 7 STATE BYWAY
17. RICH MOUNTAIN STATE BACKWAY
18. WELLSBURG-BETHANY STATE BYWAY
19. WILLIAMS RIVER STATE BACKWAY



Images: Cathedral Falls on the Midland Trail (right), New River Gorge National Park (bottom right)

All scenic byways exhibit one or more of six core intrinsic qualities — scenic, historic, recreational, cultural, archaeological, or natural. For a road to be named a **national scenic byway**, it must first be designated a **state, tribal, or federal agency scenic byway**. Once achieving that, a road may apply for **national scenic byway** designation, but its intrinsic quality must be of regional significance. **All-American Roads** are the very best of the national scenic byways, demonstrating at least two intrinsic qualities of national significance.