



**SCENIC
AMERICA**

National Scenic Byways Program: WASHINGTON

About the National Scenic Byways Program

The National Scenic Byways Program, established by Congress in 1991, recognizes historic, scenic, and culturally important roads, all of which promote economic development and tourism in communities around the U.S. There are more than 1,200 byways in all 50 states.

Washington was among the first states to establish a scenic highway system shortly after the federal program began. Washington lays claim to two All-American Roads in the Chinook Pass Scenic Byway and the International Selkirk Loop – both of which highlight the diverse natural beauty of the state as they wind through charming communities, picturesque views, waterfalls, and unique basalt flows. National scenic byways offer unmatched experiences and contribute to the robust Washington tourism sector.

Key Points

- Washington boasts 29 scenic byways, including eight national scenic byways and 21 state and federal agency scenic byways.
- National parks in Washington, like Mt. Rainier National Park, on the Chinook Scenic Byway, added \$710 million to the state economy in 2019, supporting over 6,000 jobs and \$535 million in visitor spending in gateway communities.
- Recently declared a national scenic byway, the Cascade Loop offers stunning views from the Puget Sound to the Cascade Mountains.

Images: Chinook Scenic Byway credit: Jim Culp (top), White Pass Scenic Byway (right column)

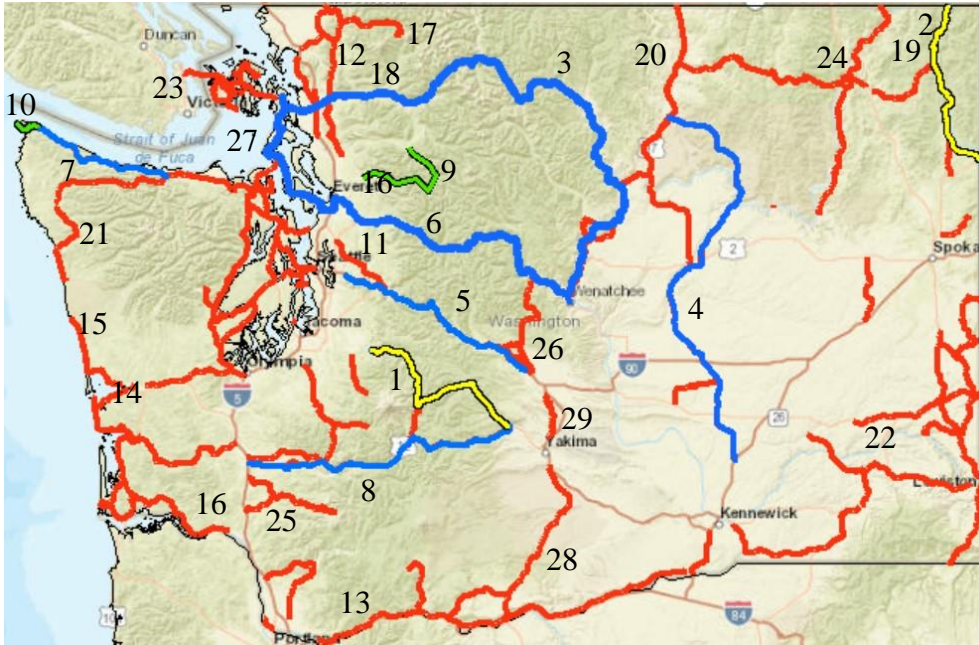
29

Washington is home to
29 scenic byways



Washington Travel Industry Facts

- > GENERATED \$2.4 BILLION IN STATE AND LOCAL TAX REVENUE, SAVING EACH HOUSEHOLD \$1,065
- > 165,000 EMPLOYED, TOTALING \$5.7 BILLION IN EARNINGS



Scenic Byways in Washington

ALL-AMERICAN ROADS

1. CHINOOK PASS SCENIC BYWAY
2. INTERNATIONAL SELKIRK LOOP

NATIONAL SCENIC BYWAYS

3. CASCADE LOOP
4. COULEE CORRIDOR SCENIC BYWAY
5. MOUNTAINS TO SOUND GREENWAY
6. STEVENS PASS GREENWAY
7. STRAIT OF JUAN DE FUCA HIGHWAY 112
8. WHITE PASS SCENIC BYWAY

FEDERAL AGENCY BYWAYS

9. MOUNTAIN LOOP SCENIC BYWAY

STATE SCENIC BYWAYS

10. CAPE FLATTERY TRIBAL
11. CASCADE VALLEYS
12. CHUCKANUT DRIVE
13. COLUMBIA RIVER GORGE
14. CRANBERRY COAST BYWAY
15. HIDDEN COAST SCENIC BYWAY
16. LEWIS AND CLARK TRAIL
17. MT. BAKER SCENIC BYWAY
18. NORTH CASCADES
19. NORTH PEND OREILLE
20. OKANGOGAN TRAIL
21. PACIFIC COAST SCENIC BYWAY
22. PALOUSE SCENIC BYWAY
23. SAN JUAN ISLANDS
24. SHERMAN PASS
25. SPIRIT LAKE MEMORIAL HIGHWAY
26. SWIFTWATER CORRIFOR
27. WHIDBEY SCENIC ISLE WAY
28. YAKAMA SCENIC BYWAY
29. YAKIMA RIVER CANYON



Washington byways provide access to the state's most spectacular public lands including:

- > 3 National Parks
- > 132 State Parks
- > 3 National Recreation Areas
- > 7 National Forests
- > 6 State Recreation Areas



Images: Dewey Lake, off the Chinook Pass Scenic Byway (top right) Mt. Baker Scenic Highway credit: outdoorPDK (bottom)

All scenic byways exhibit one or more of six core intrinsic qualities — scenic, historic, recreational, cultural, archaeological, or natural. For a road to be named a **national scenic byway**, it must first be designated a **state, tribal, or federal agency scenic byway**. Once achieving that, a road may apply for **national scenic byway** designation, but its intrinsic quality must be of regional significance. **All-American Roads** are the very best of the national scenic byways, demonstrating at least two intrinsic qualities of national significance.