



**SCENIC
AMERICA**

National Scenic Byways Program: VERMONT

About the National Scenic Byways Program

The National Scenic Byways Program, established by Congress in 1991, recognizes historic, scenic, and culturally important roads, all of which promote economic development and tourism in communities around the U.S. There are more than 1,200 byways in all 50 states.

Vermont established its Scenic Roads Law in 1977, creating the authority to designate state highways as scenic roads. The Vermont State Byways Program was established in 1996 to reflect the standards of the National Scenic Byways Program. The Vermont Scenery Preservation Council, created in 1966 and reactivated in 1993, oversees scenic conservation throughout the state and manages the byway designation process.

Key Points

- Vermont is home to one national scenic byway and nine state scenic byways.
- Scenic byways play a key role in promoting Vermont tourism, which in 2019 was a \$3 billion industry that supported over 30,000 jobs in Vermont, generating \$373 million in tax revenue.
- Visitors traveling the Connecticut River Byway can experience Vermont's history while enjoying the many outdoor recreation amenities the route offers.

Images: Green Mountain Scenic Byway (top), Woodstock via The Crossroad of Vermont Byway credit: Vermont Tourism (right column)

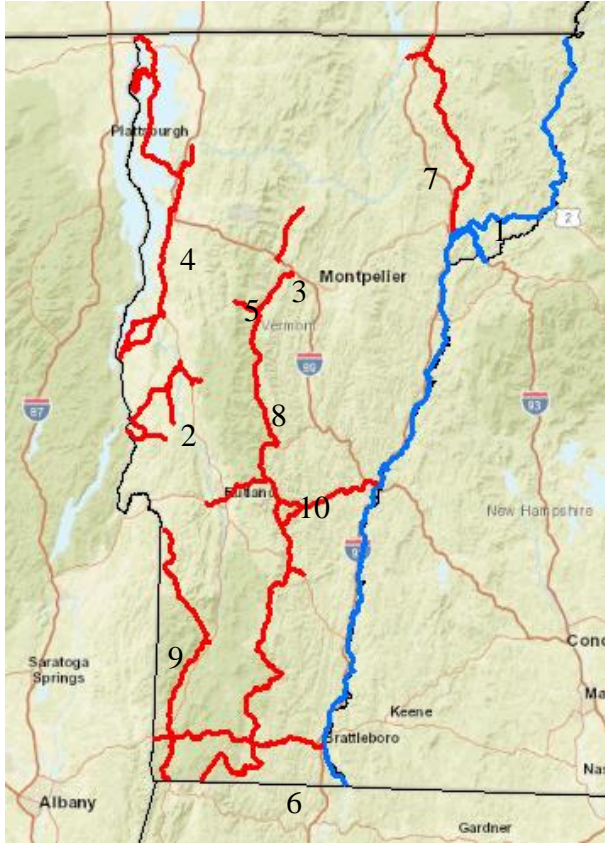
10

**Vermont is home to
10 scenic byways**



Vermont Travel Industry Facts

- > \$3 billion industry in 2019
- > Supported 30,000+ jobs
- > Over \$370 million in tax revenue generated



Scenic Byways in Vermont

NATIONAL SCENIC BYWAYS

1. CONNECTICUT RIVER BYWAY

STATE SCENIC BYWAYS

2. CROSSROADS OF VERMONT
3. GREEN MOUNTAIN BYWAY
4. LAKE CHAMPLAIN BYWAY
5. MAD RIVER BYWAY
6. MOLLY STARK SCENIC BYWAY
7. NORTHEAST KINGDOM BYWAY
8. SCENIC ROUTE 100 BYWAY
9. THE SHIRES OF VERMONT
10. STONE VALLEY BYWAY

All scenic byways exhibit one or more of six core intrinsic qualities — scenic, historic, recreational, cultural, archaeological, or natural. For a road to be named a **national scenic byway**, it must first be designated a **state, tribal, or federal agency scenic byway**. Once achieving that, a road may apply for **national scenic byway** designation, but its intrinsic quality must be of regional significance. **All-American Roads** are the very best of the national scenic byways, demonstrating at least two intrinsic qualities of national significance.



Vermont byways provide access to spectacular public lands including:

- > 55 State Parks
- > 2 National Scenic Trails
- > 1 National Historic Park
- > 4.5 Million Acres of State Forests
- > 80+ Wildlife Management Areas



Images: Lake Champlain Byway credit: Vermont Tourism (top), Harlow's Farm Stand via Connecticut River Byway credit: National Archives (bottom)