



**SCENIC
AMERICA**

National Scenic Byways Program: NEW HAMPSHIRE

About the National Scenic Byways Program

The National Scenic Byways Program, established by Congress in 1991, recognizes historic, scenic, and culturally important roads, all of which promote economic development and tourism in communities around the U.S. There are more than 1,200 byways in all 50 states.

New Hampshire is home to 20 scenic byways, totaling over 1,000 miles and showcasing a variety of beaches, mountain ranges, agricultural places, and historic sites; all of which highlight New Hampshire's unique character. As one of the nation's original 13 colonies, the scenic byways highlight many renowned landmarks special to the state, including Fort Constitution (formerly known as Fort William and Mary) and Fort Stark, located along the Coastal Byway.

Key Points

- New Hampshire is home to three national scenic byways and 17 state scenic byways.
- A study found that in 2019 alone, the direct travel impacts resulted in \$5.9 billion in total spending and \$321 million in tax revenue.
- In the White Mountain region, 10,600 jobs were supported by travel spending in 2019.

20

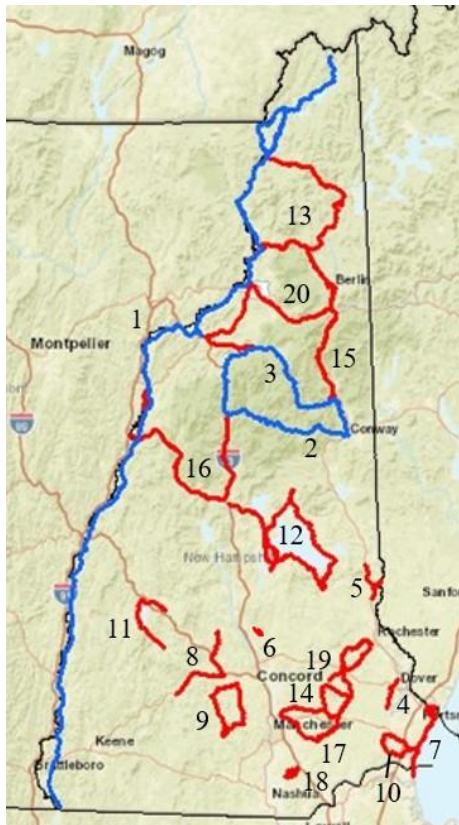
New Hampshire is home to
20 scenic byways



New Hampshire Travel Industry Facts

- > Direct travel resulted in \$5.9 billion in total spending
- > White Mountain region alone has 10,600 jobs supported by tourism

Images: Kancamagus Highway (top), White Mountain Trail credit: National Archives (column)



Scenic Byways in New Hampshire

NATIONAL SCENIC BYWAYS — STATE SCENIC BYWAYS —

- | | |
|---|--|
| <ol style="list-style-type: none"> 1. CONNECTICUT RIVER SCENIC BYWAY 2. KANCAMAGUS HIGHWAY 3. WHITE MOUNTAIN TRAIL | <ol style="list-style-type: none"> 4. AMOSKEAG MILLYARD SCENIC AND CULTURAL BYWAY 5. BRANCH RIVER VALLEY SCENIC BYWAY 6. CANTERBURY BYWAY 7. COASTAL BYWAY 8. CURRIER AND IVES TRAIL 9. GENERAL JOHN STARK BYWAY 10. AMERICAN INDEPENDENCE BYWAY 11. LAKE SUNAPEE SCENIC AND CULTURAL BYWAY 12. LAKES REGION TOUR 13. MOOSE PATH TRAIL 14. OLD STAGECOACH BYWAY 15. PRESIDENTIAL RANGE BYWAY 16. RIVER HERITAGE TRAIL 17. ROBERT FROST SCENIC BYWAY 18. THE APPLEWAY 19. UPPER LAMPREY SCENIC BYWAY 20. WOODLAND HERITAGE TRAIL |
|---|--|

All scenic byways exhibit one or more of six core intrinsic qualities — scenic, historic, recreational, cultural, archaeological, or natural. For a road to be named a **national scenic byway**, it must first be designated a **state, tribal, or federal agency scenic byway**. Once achieving that, a road may apply for **national scenic byway** designation, but its intrinsic quality must be of regional significance. **All-American Roads** are the very best of the national scenic byways, demonstrating at least two intrinsic qualities of national significance.



New Hampshire byways provide access to the state's most spectacular public lands including:

- > 2 National Parks
- > 93 State Parks
- > 1 National Heritage Area
- > 23 National Historic Landmarks
- > 117 State Forests



Images: General John Stark Byway credit: GSB.org (top), Currier and Ives Scenic Byway credit: C&I.org (bottom)