



National Scenic Byways Program: COLORADO

About the National Scenic Byways Program

The National Scenic Byways Program, established by Congress in 1991, recognizes historic, scenic, and culturally important roads, all of which promote economic development and tourism in communities around the U.S. There are more than 1,200 byways in all 50 states.

Colorado established the Scenic and Historic Byways Program in 1989. Over the span of three decades, the program has designated 26 Colorado routes showcasing the state's exceptional scenic, ecological, cultural, and historic Byways Commission, and in collaboration with the Colorado Department of Transportation.

Key Points

- Colorado is home to 26 scenic byways, including 13 national scenic byways and 13 state scenic byways.
- The travel industry directly impacts the employment of 171,000 Coloradans and \$6.3 billion in wages.
- Grants sourced from the National Scenic Byways Program for Colorado from 1991 through 2012 totaled \$17,945,194.
- A 2016 economic analysis of the state's economy determined cumulative visitor spending while traveling the byways from 2009 to 2014 at nearly \$4.8 billion.

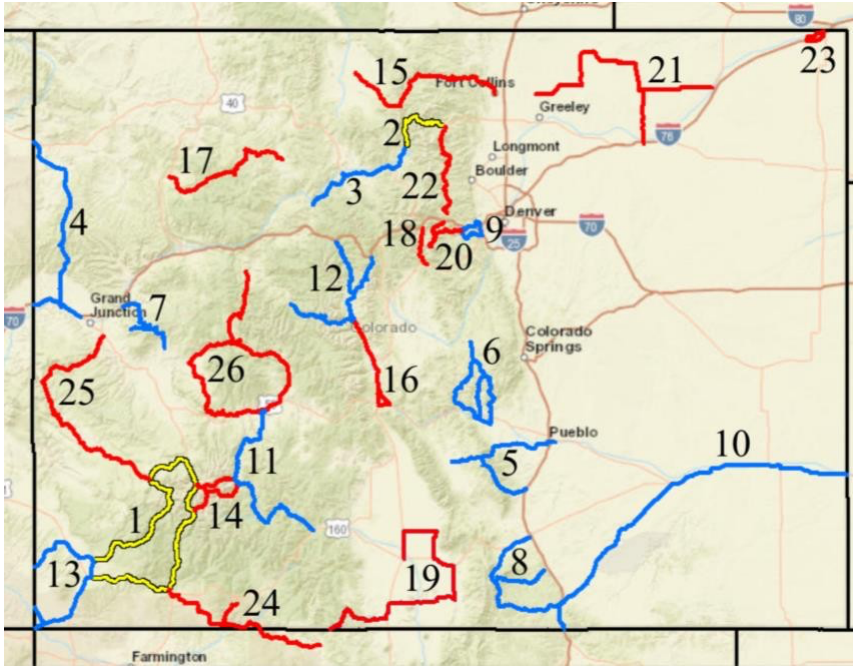
26

Colorado is home to
26 scenic byways.



Colorado Travel Industry Facts

- > Supports 171,000 jobs.
- > Nearly \$800 million in annual economic impact from visitor spending.



Scenic Byways in Colorado

ALL-AMERICAN ROADS

1. SAN JUAN SKYWAY
2. TRAIL RIDGE ROAD-ROCKY MOUNTAIN NATIONAL PARK

NATIONAL SCENIC BYWAYS

3. COLORADO RIVER HEADWATERS
4. DINOSAUR DIAMOND PREHISTORIC HIGHWAY
5. FRONTIER PATHWAYS SCENIC AND HISTORIC BYWAY
6. GOLD BELT TOUR SCENIC AND HISTORIC BYWAY
7. GRAND MESA SCENIC AND HISTORIC BYWAY
8. HIGHWAY OF LEGENDS
9. LARIAT LOOP SCENIC AND HISTORIC BYWAY
10. SANTA FE TRAIL
11. SILVER THREAD
12. TOP OF THE ROCKIES
13. TRAIL OF THE ANCIENTS

STATE SCENIC BYWAYS

14. ALPINE LOOP
15. CACHE LA POUDE-NORTH PARK
16. COLLEGIATE PEAKS BYWAY
17. FLAT TOPS TRAIL
18. GUANELLA PASS SCENIC AND HISTORIC BYWAY
19. LOS CAMINOS ANTIGUOS SCENIC AND HISTORIC BYWAY
20. MOUNT EVANS SCENIC AND HISTORIC BYWAY
21. PAWNEE PIONEER TRAILS
22. PEAK TO PEAK SCENIC BYWAY
23. SOUTH PLATTE RIVER TRAIL
24. TRACKS ACROSS BORDERS
25. UNAWEEP TABEGUACHE SCENIC AND HISTORIC BYWAY
26. WEST ELK LOOP



Colorado byways provide access to the state's most spectacular public lands, including:

- > 4 National Parks
- > 23 State Parks
- > 13 National Recreational Trails
- > 8 National Forests
- > 8 National Monuments



Images: Top of the Rockies (top right), Scenic Highway of Legends (bottom right)

All scenic byways exhibit one or more of six core intrinsic qualities — scenic, historic, recreational, cultural, archaeological, or natural. For a road to be named a **national scenic byway**, it must first be designated a **state, tribal, or federal agency scenic byway**. Once achieving that, a road may apply for **national scenic byway** designation, but its intrinsic quality must be of regional significance. **All-American Roads** are the very best of the national scenic byways, demonstrating at least two intrinsic qualities of national significance.



727 15TH STREET NW, SUITE 1100
 WASHINGTON, DC 20005
 202.792.1300
 SCENIC.ORG