

The logo for Scenic America, featuring the words "Scenic America" in a white, elegant script font, set against a background of a vast, layered mountain range under a clear blue sky.

NATIONAL SCENIC BYWAYS PROGRAM: UTAH

ABOUT THE NATIONAL SCENIC BYWAYS PROGRAM

The National Scenic Byways Program, established by Congress in 1991, recognizes historic, scenic, and culturally important roads, all of which promote economic development and tourism in communities around the U.S. There are more than 1,200 byways in all 50 states.

The **Utah** Scenic Byway Program has been active since the mid-1980s. The combined 2,200 miles of scenic byways connect 5 national parks, 43 state parks, 7 national monuments, 2 national recreation areas and more than 9 million acres of national forest land with Utah's vibrant cities and welcoming towns. The state's scenic byways program is administered by the Utah State Scenic Byway Committee which includes representatives from the state's Office of Economic Development, Utah Department of Transportation, the Division of State Parks and Recreation, the Federal Highway Administration, the National Park Service, the U.S. Forest Service, the Bureau of Land Management, and a governor-appointed representative from the tourism industry.

KEY POINTS

- Utah is home to 9 national scenic byways and 29 state and federal scenic byways.
- A 2014 study found that Utah's Scenic Byway 12 was responsible for generating \$13 million in economic activity for the communities along its route.
- Over 10 million people visited Utah's state parks and national recreation areas in 2017, according to the Kem C. Gardner Policy Institute at the University of Utah.
- Estimated traveler spending in Utah increased 7.2% from 2016-2017.

38

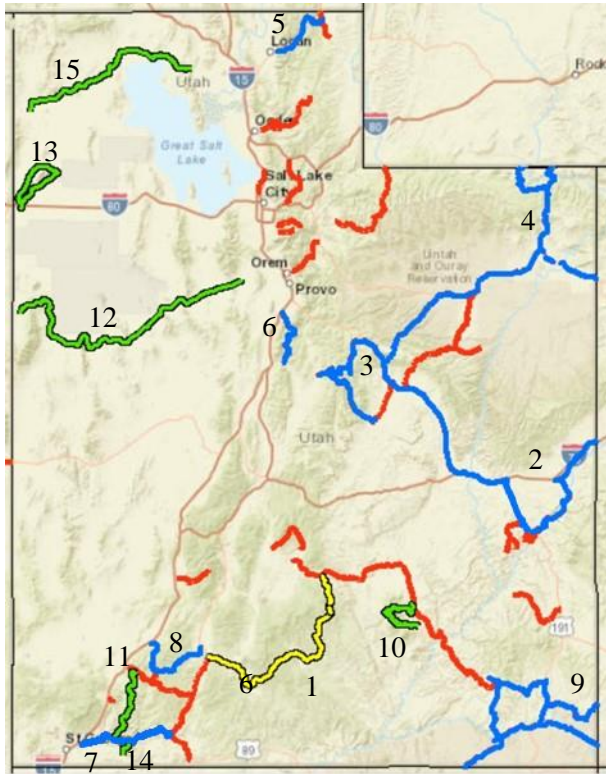
UTAH IS HOME TO
38 SCENIC BYWAYS



TRAVEL INDUSTRY FACTS

- > GENERATED A 7.2% INCREASE IN TRAVELER SPENDING FROM 2016-17
- > OVER 10 MILLION PEOPLE VISITED STATE PARKS AND REC AREAS IN 2017

Images: Rainbow Point Bryce Canyon NP (top), Dinosaur Diamond Highway credit: [National Archives](#) (right column)



STATE BYWAYS PROVIDE ACCESS TO THE STATE'S MOST SPECTACULAR PUBLIC LANDS INCLUDING:

- > 5 NATIONAL PARKS
- > 43 STATE PARKS
- > 7 NATIONAL MONUMENTS
- > 2 NATIONAL RECREATION AREAS
- > 6 NATIONAL FORESTS
- > 35 WILDERNESS AREAS



Images: Delicate Arch, Arches NP (top), Colorado Recreational River credit: [BLM](#) (bottom)

SCENIC BYWAYS IN UTAH

ALL-AMERICAN ROADS



1. SCENIC BYWAY 12

NATIONAL SCENIC BYWAYS



2. DINOSAUR DIAMOND PREHISTORIC HIGHWAY
3. THE ENERGY LOOP: HUNTINGTON/ECCLES CANYONS SCENIC BYWAY
4. FLAMING GORGE-UINTAS NATIONAL SCENIC BYWAY
5. LOGAN CANYON SCENIC BYWAY
6. NEBO LOOP SCENIC BYWAY
7. ZION SCENIC BYWAY
8. SCENIC BYWAY 143- UTAH'S PATCHWORK PARKWAY
9. TRAIL OF THE ANCIENTS

FEDERAL AGENCY BYWAYS



10. BULL CREEK PASS NATIONAL BACKCOUNTRY BYWAY
11. KOLOB RESERVIOR NATIONAL PARK ROAD
12. PONY EXPRESS TRAIL NATIONAL BACKCOUNTRY BYWAY
13. SILVER ISLAND MOUNTAIN NATIONAL BACKCOUNTRY BYWAY
14. SMITHSONIAN BUTTE NATIONAL BACKCOUNTRY BYWAY
15. TRANSCONTINENTAL RAILROAD BACKCOUNTRY

STATE SCENIC BYWAYS



16-38. VISIT THE [UTAH PROGRAM WEBSITE](#) FOR THE COMPLETE LIST OF UTAH STATE BYWAYS

All scenic byways exhibit one or more of six core intrinsic qualities — scenic, historic, recreational, cultural, archaeological, or natural. For a road to be named a **national scenic byway**, it must first be designated a **state, tribal, or federal agency scenic byway**. Once achieving that, a road may apply for **national scenic byway** designation, but its intrinsic quality must be of regional significance. **All-American Roads** are the very best of the national scenic byways, demonstrating at least two intrinsic qualities of national significance.