

## NATIONAL SCENIC BYWAYS PROGRAM: OREGON

### ABOUT THE NATIONAL SCENIC BYWAYS PROGRAM

The National Scenic Byways Program, established by Congress in 1991, recognizes historic, scenic, and culturally important roads, all of which promote economic development and tourism in communities around the U.S. There are more than 1,200 byways in all 50 states.

**Oregon's** scenic byways highlight a variety of breathtaking natural features, including lava flows, meadows, alpine lakes, and snow tipped peaks. The prevalence of American history attracts many visitors each year, as several of Oregon's scenic byways cross paths with the historic Oregon Trail, traveled by many famous frontiersmen such as Lewis and Clark and Kit Carson.

### KEY POINTS

- Oregon is home to 44 scenic byways, including 4 All-American Roads, 6 national scenic byways, and 34 state or federal agency byways.
- A 2020 study found that in total, the Oregon travel industry employed 117,500 people.
- Research indicates that travel-generated employment serves a higher importance in the rural counties of Oregon. The two other largest export-orientated industries in Oregon include agriculture/food processing and logging/wood products.
- According to a study from 2016, the average overnight visitor spends \$147 per day.
- In 2019, a total of 29.4 million overnight visitors traveled to Oregon destinations.

44

OREGON IS HOME TO  
44 SCENIC BYWAYS

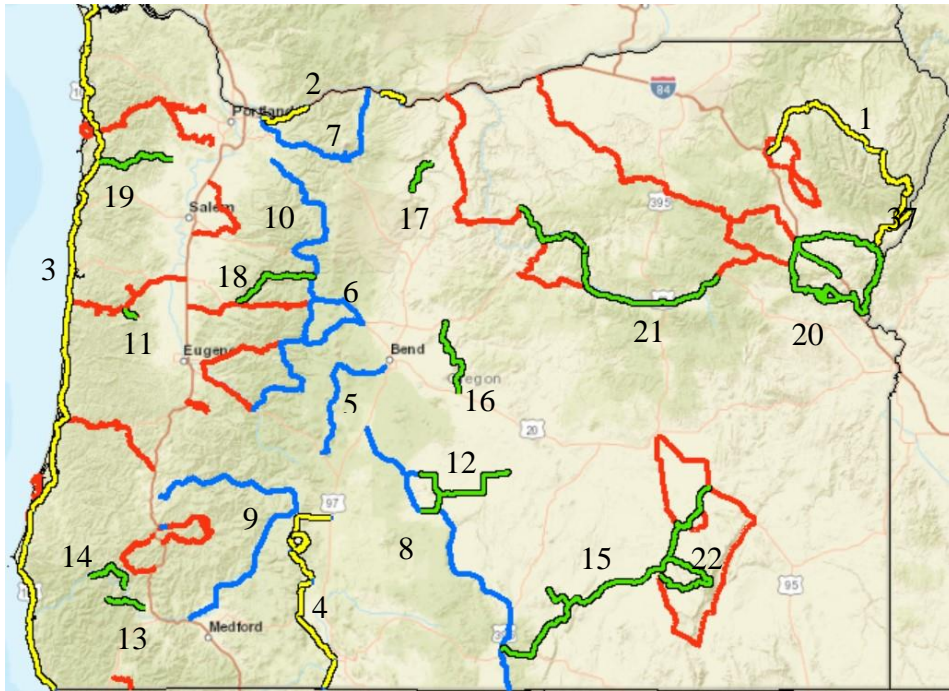


### OREGON TRAVEL INDUSTRY FACTS

> IN 2019 VISITORS SPENT \$12.8  
BILLION, A 3.6% INCREASE  
FROM 2018

> SUPPORTS OVER 117,000 JOBS

Images: Rogue-Umpqua Scenic Byway credit: [National Archives](#) (top), Volcanic Legacy Scenic Byway credit: [National Archives](#) (right column)



## SCENIC BYWAYS IN OREGON

### FEDERAL AGENCY BYWAYS

#### ALL-AMERICAN ROADS

1. HELLS CANYON SCENIC BYWAY
2. HISTORIC COLUMBIA RIVER HIGHWAY
3. PACIFIC COAST SCENIC BYWAY – OREGON
4. VOLCANIC LEGACY SCENIC BYWAY

#### NATIONAL SCENIC BYWAYS

5. CASCADE LAKES SCENIC BYWAY
6. MCKENZIE PASS-SANTIAM PASS SCENIC BYWAY
7. MT. HOOD SCENIC BYWAY
8. OUTBACK SCENIC BYWAY
9. ROGUE-UMPQUA SCENIC BYWAY
10. WEST CASCADES SCENIC BYWAY

#### STATE SCENIC BYWAYS

23-44. VISIT [THE ODOT WEBSITE](#) FOR THE COMPLETE LIST OF OREGON STATE BYWAYS

11. ALSEA RIVER BACK COUNTRY BYWAY
12. CHRISTMAS VALLEY BACK COUNTRY BYWAY
13. GALICE TO HELLGATE BACK COUNTRY BYWAY
14. GRAVE CREEK TO MARIAL BACK COUNTRY BYWAY
15. LAKEVIEW TO STEENS MOUNTAIN BACK COUNTRY BYWAY
16. LOWER CROOKED RIVER BACK COUNTRY BYWAY
17. LOWER DESCHUTES RIVER BACK COUNTRY BYWAY
18. QUARTZVILLE ROAD BACK COUNTRY BYWAY
19. NESTUCCA RIVER BACK COUNTRY BYWAY
20. SNAKE RIVER- MORMON BASIN BACK COUNTRY BYWAY
21. SOUTH FORK JOHN DAY RIVER BACK COUNTRY BYWAY
22. STEENS MOUNTAIN BACK COUNTRY BYWAY



OREGON BYWAYS PROVIDE ACCESS TO SPECTACULAR PUBLIC LANDS INCLUDING:

- > 5 NATIONAL PARKS
- > 254 STATE PARKS
- > 17 NATIONAL HISTORIC LANDMARKS
- > 11 NATIONAL NATURAL LANDMARKS
- > 362 MILES OF OCEAN SHORE FRONT
- > 1 NATIONAL GEOLOGIC TRAIL



Images: Pacific Coast Scenic Byway credit: [National Archives](#) (top), Cascade Lakes Scenic Byway credit: [National Archives](#) (bottom)

All scenic byways exhibit one or more of six core intrinsic qualities — scenic, historic, recreational, cultural, archaeological, or natural. For a road to be named a **national scenic byway**, it must first be designated a **state, tribal, or federal agency scenic byway**. Once achieving that, a road may apply for **national scenic byway** designation, but its intrinsic quality must be of regional significance. **All-American Roads** are the very best of the national scenic byways, demonstrating at least two intrinsic qualities of national significance.