

ScenicAmerica

NATIONAL SCENIC BYWAYS PROGRAM: OHIO

ABOUT THE NATIONAL SCENIC BYWAYS PROGRAM

The National Scenic Byways Program, established by Congress in 1991, recognizes historic, scenic, and culturally important roads, all of which promote economic development and tourism in communities around the U.S. There are more than 1,200 byways in all 50 states.

The Ohio Scenic Byway Program is considered a “grassroots” effort to heighten the awareness of the resources that the state has to offer. The Ohio Department of Transportation established the program in 1998, replacing an older Scenic Highway Program that began in 1962. The program requires byway managers to complete an Annual Activity Survey that tracks the accomplishments of the byway management plan update every five years. This stewardship enhances enjoyment of roads such as the Amish Country National Scenic Byway, which highlights 76 miles of scenic landscapes in Ohio.

KEY POINTS

- Ohio is home to 28 scenic byways, including 6 national scenic byways and 22 state scenic byways.
- In 2017, 219 million travelers visited Ohio and spent \$4 billion to support 420,000 jobs.
- \$4.1 billion was generated in state taxes from 2012-2016, accounting for 11% of the state’s sales tax revenue.

28

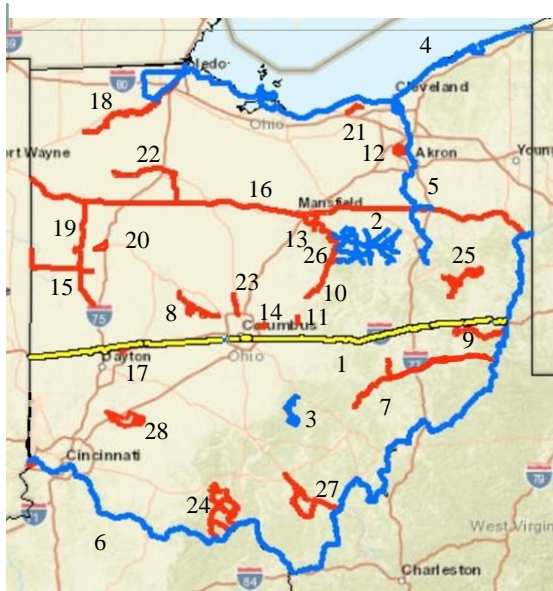
OHIO IS HOME TO
28 SCENIC BYWAYS



OHIO TRAVEL INDUSTRY FACTS

- > VISITORS SPENT \$4 BILLION IN 2017, SUPPORTING 420,000 JOBS
- > GENERATED OVER \$4 BILLION IN STATE TAXES FROM 2012-2016

Images: Lake Erie Coastal Ohio Trail credit: [National Archives](#) (top), Amish Country Byway credit [National Archives](#) (column)



SCENIC BYWAYS IN OHIO

ALL-AMERICAN ROADS



1. HISTORIC NATIONAL ROAD

NATIONAL SCENIC BYWAYS



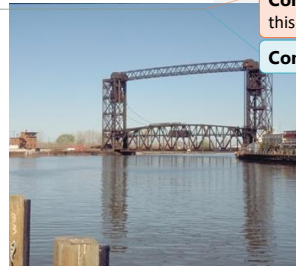
2. AMISH COUNTRY
3. HOCKING HILLS SCENIC BYWAY
4. LAKE ERIE COASTAL OHIO TRAIL
5. OHIO & ERIE CANALWAY
6. OHIO RIVER SCENIC BYWAY

STATE SCENIC BYWAYS



7. APPALACHIAN BYWAY
8. BIG DARBY PLAINS
9. DROVERS' TRAIL
10. GATEWAY TO AMISH COUNTRY
11. GRANVILLE SCENIC BYWAY
12. HERITAGE CORRIDORS OF BATH
13. JOHNNY APPLESEED HISTORIC BYWAY
14. JEFFERSON TOWNSHIP BYWAY

15. LAND OF THE CROSS-TIPPED CHURCHES
16. LINCOLN HIGHWAY HISTORIC BYWAY
17. LOWER VALLEY PIKE
18. MAUMEE VALLEY
19. MIAMI & ERIE CANAL
20. NEIL ARMSTRONG SCENIC BYWAY
21. NORTH RIDGE SCENIC BYWAY
22. OLD MILL STREAM
23. OLENTANGY HERITAGE CORRIDOR
24. SCIOTO HERITAGE TRAIL
25. TAPPAN-MOROVIAN TRAIL SCENIC BYWAY
26. WALLY ROAD SCENIC BYWAY
27. WELSH SCENIC BYWAY
28. QUAKER HERITAGE SCENIC BYWAY



Commented [RA1]: Should the first point in the box on this page be 1 national park?

Commented [NO2R1]: Corrected

OHIO BYWAYS PROVIDE ACCESS TO THE STATE'S MOST SPECTACULAR PUBLIC LANDS INCLUDING:

- > 1 NATIONAL PARK
- > 74 STATE PARKS
- > 23 STATE FORESTS
- > 2 NATIONAL HISTORICAL PARKS
- > 3 NATIONAL HISTORIC SITES



Images: Ohio and Erie Canalway credit: [National Archives](#) (top), Ohio River Scenic Byway credit: [National Archives](#) (bottom)

All scenic byways exhibit one or more of six core intrinsic qualities — scenic, historic, recreational, cultural, archaeological, or natural. For a road to be named a **national scenic byway**, it must first be designated a **state, tribal, or federal agency scenic byway**. Once achieving that, a road may apply for **national scenic byway** designation, but its intrinsic quality must be of regional significance. **All-American Roads** are the very best of the national scenic byways, demonstrating at least two intrinsic qualities of national significance.

*Scenic*America

727 15TH STREET NW, SUITE 1100
 WASHINGTON, DC 20005
 202.792.1300
 SCENIC.ORG