



ScenicAmerica

NATIONAL SCENIC BYWAYS PROGRAM: NEW YORK

ABOUT THE NATIONAL SCENIC BYWAYS PROGRAM

The National Scenic Byways Program, established by Congress in 1991, recognizes historic, scenic, and culturally important roads, all of which promote economic development and tourism in communities around the U.S. There are more than 1,200 byways in all 50 states.

The **New York** State Scenic Byways Program was created by the state legislature in 1992. The program encourages not only economic development but also resource conservation. New York was an early pioneer of scenic road development, building four parkways between 1912 and 1930. Since the creation of New York's scenic byways program, over 3,100 miles of byways have been designated across the state.

KEY POINTS

- New York is home to 115 scenic byways, boasting 1 All-American Road along with 3 national scenic byways and 26 state scenic byways, as well as 48 scenic roads and 37 scenic parkways.
- In 2019, visitor spending totaled \$73.6 billion in New York, a cumulative 39% increase in spending since the 2008 recession.
- A 2019 report showed that over 810,000 jobs were sustained by tourism activity in 2019 with a total income of \$39.8 billion.

115

NEW YORK IS HOME TO
115 SCENIC BYWAYS

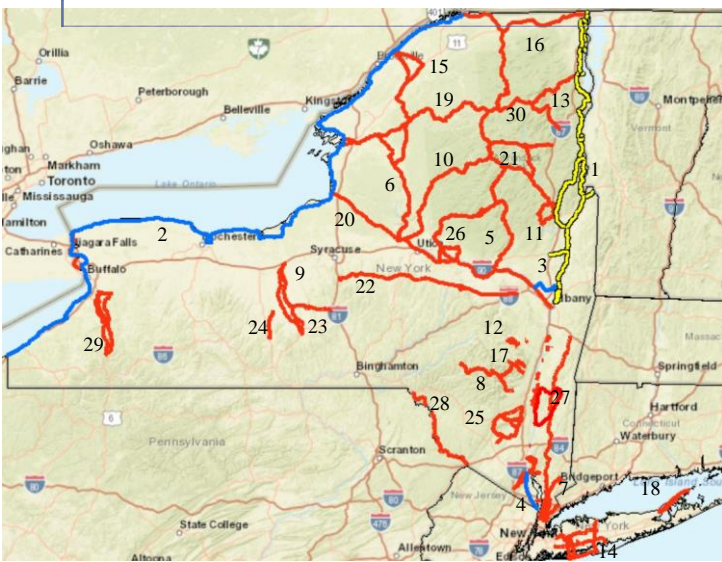


NEW YORK TRAVEL INDUSTRY FACTS

> VISITOR SPENDING INCREASED
39% SINCE 2008

> SUPPORTED 810,000 JOBS IN
2019

Images: Great Lakes Seaway Trail credit: [National Archives](#) (top), Lakes to Locks Passage credit: [National Archives](#) (column)



Commented [RA1]: The treatment of the scenic roads that aren't state designated is a little confusing. Are they on the map in red? Should they be listed differently?

Commented [NO2R1]: Except in a few cases, the max number of byways we can list on a one page using this format is 30. New York has three different state designation programs which pre-date the national program, and we have highlighted the state program which most conforms to the federal program. The non-listed byways are included on the map, unlabeled, but they are small and often form part of the larger state routes.



NEW YORK BYWAYS PROVIDE ACCESS TO THE STATE'S MOST SPECTACULAR PUBLIC LANDS INCLUDING:

- > 180 STATE PARKS
- > 7 NATIONAL MONUMENTS
- > 10 NATIONAL HISTORIC SITES
- > 4 NATIONAL SCENIC AND HISTORIC TRAILS
- > 1 NATIONAL SEASHORE



Images: Mohawk Towpath credit: [National Archives](#) (top), Lakes to Locks Passage credit: [National Archives](#) (bottom)

SCENIC BYWAYS IN NEW YORK

ALL-AMERICAN ROADS

1. LAKES TO LOCKS PASSAGE

NATIONAL SCENIC BYWAYS

2. GREAT LAKES SEAWAY TRAIL
3. MOHAWK TOWPATH BYWAY
4. PALISADES SCENIC BYWAY

STATE SCENIC BYWAYS

5. ADIRONDACK TRAIL
6. BLACK RIVER TRAIL
7. BRONX RIVER PARKWAY
8. CATSKILL MOUNTAINS
9. CAYUGA LAKE
10. CENTRAL ADIRONDACK TRAIL
11. DUDE RANCH TRAIL
12. DURHAM VALLEY
13. HIGH PEAKS BYWAY
14. HISTORIC PARKWAYS OF LONG ISLAND

15. MAPLE TRADITIONS TRAIL
16. MILITARY TRAIL
17. MOUNTAIN CLOVES
18. NORTH FORK TRAIL
19. OLYMPIC TRAIL
20. REVOLUTIONARY BYWAY
21. ROOSEVELT-MARCY BYWAY
22. THE US ROUTE 20 BYWAY
23. SCENIC ROUTE 90
24. SENECA LAKE BYWAY
25. SHAWANGUNK MOUNTAINS
26. SOUTHERN ADIRONDACK TRAIL
27. TACONIC STATE PARKWAY
28. UPPER DELAWARE
29. WESTERN NEW YORK SOUTHTOWNS
30. BLUE RIDGE ROAD

ADDITIONAL LEGISLATED NEW YORK SCENIC ROADWAYS

- 48 NYS SCENIC ROADS
- 37 NYS PARKWAYS

All scenic byways exhibit one or more of six core intrinsic qualities — scenic, historic, recreational, cultural, archaeological, or natural. For a road to be named a **national scenic byway**, it must first be designated a **state, tribal, or federal agency scenic byway**. Once achieving that, a road may apply for **national scenic byway** designation, but its intrinsic quality must be of regional significance. **All-American Roads** are the very best of the national scenic byways, demonstrating at least two intrinsic qualities of national significance.



727 15TH STREET NW, SUITE 1100
 WASHINGTON, DC 20005
 202.792.1300
 SCENIC.ORG