

A wide-angle landscape photograph showing a vast, flat, golden-brown field in the foreground. In the middle ground, there are several large, rounded, rocky hills or mesas under a clear blue sky. A large, leafy tree is visible on the right side of the frame, partially obscuring the view.

NATIONAL SCENIC BYWAYS PROGRAM: NEW MEXICO

ABOUT THE NATIONAL SCENIC BYWAYS PROGRAM

The National Scenic Byways Program, established by Congress in 1991, recognizes historic, scenic, and culturally important roads, all of which promote economic development and tourism in communities around the U.S. There are more than 1,200 byways in all 50 states.

New Mexico boasts 26 scenic byways in total, 8 of which are national scenic byways while 18 are state or federal agency scenic byways. New Mexico enacted its state scenic byway program on July 31, 1998, in partnership with the New Mexico Department of Transportation (NMDOT) and the New Mexico State Highway Department. Funding has since also come from SAFETEA- LU (2005).

KEY POINTS

- New Mexico is home to 26 scenic byways, including 8 national scenic byways, and 18 state scenic byways.
- The Salinas Pueblo Missions National Monument can be visited along the centuries-old Abo Pass Trail State Scenic Byway.
- El Camino Real National Scenic Byway is the country's oldest and most used "highway"; the Camino Real brought European colonists to New Spain 22 years before the pilgrims arrived at Plymouth Rock.
- El Camino Real National Scenic Byway stretches over 600 miles through New Mexico and both Northern and Southern California.

26

NEW MEXICO IS HOME TO
26 SCENIC BYWAYS

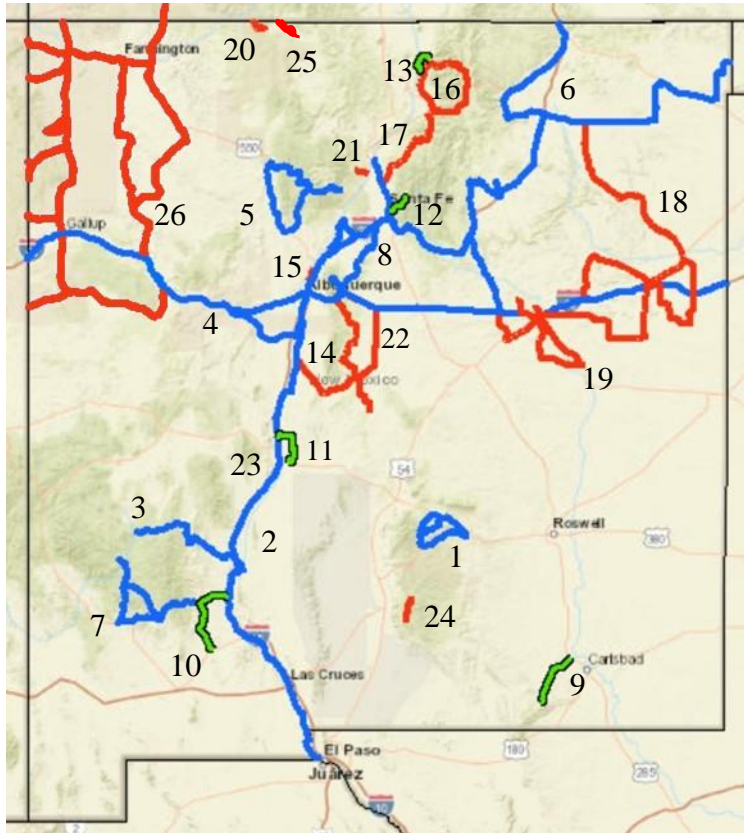


NEW MEXICO TRAVEL INDUSTRY FACTS

> SINCE 2011 TOURISM
SPENDING HAS INCREASED
BY OVER \$1.1 BILLION

> OVER 93,000 JOBS IN THE
TOURISM INDUSTRY

Images: Santa Fe Trail credit: [National Archives](#)
(top), Trail of the Mountain Spirits credit: [National Archives](#) (right column)



SCENIC BYWAYS IN NEW MEXICO

NATIONAL SCENIC BYWAYS

1. BILLY THE KID TRAIL
2. EL CAMINO REAL ROAD
3. GERONIMO TRAIL SCENIC BYWAY
4. HISTORIC ROUTE 66
5. JEMEZ MOUNTAIN TRAIL
6. SANTE FE TRAIL
7. TRAIL OF THE MOUNTAIN SPIRITS SCENIC BYWAY
8. TURQUOISE TRAIL

FEDERAL AGENCY BYWAYS

9. GUADALUPE BACKCOUNTRY BYWAY
10. LAKE VALLEY BACK COUNTRY BYWAY
11. QUEBRADAS BACKCOUNTRY BYWAY
12. SANTE FE NATIONAL FOREST BYWAY
13. WILD RIVERS BACKCOUNTRY BYWAY

STATE SCENIC BYWAYS

14. ABO PASS TRAIL
15. CORRALES ROAD SCENIC BYWAY
16. ENCHANTED CIRCLE SCENIC BYWAY
17. HIGH ROAD TO TAOS
18. LA FRONTERA DEL LLANO
19. MESALANDS SCENIC BYWAY
20. NARROW GAUGE SCENIC BYWAY
21. PUYE CLIFFS SCENIC BYWAY
22. SALT MISSIONS TRAIL
23. SOCORRO HISTORICAL DISTRICT BYWAY
24. SUNSPOT SCENIC BYWAY
25. TRACKS ACROSS BORDERS
26. TRAIL OF THE ANCIENTS



NEW MEXICO BYWAYS
PROVIDE ACCESS TO THE
STATE'S MOST SPECTACULAR
PUBLIC LANDS INCLUDING:

- > 15 NATIONAL PARKS
- > 35 STATE PARKS
- > 3 NATIONAL TRAILS
- > 46 NATIONAL HISTORIC LANDMARKS
- > 3 WORLD HERITAGE SITES



Images: Geronimo Trail credit: [National Archives](#) (top), Jemez Mountain Trail credit: [National Archives](#) (bottom)

All scenic byways exhibit one or more of six core intrinsic qualities — scenic, historic, recreational, cultural, archaeological, or natural. For a road to be named a **national scenic byway**, it must first be designated a **state, tribal, or federal agency scenic byway**. Once achieving that, a road may apply for **national scenic byway** designation, but its intrinsic quality must be of regional significance. **All-American Roads** are the very best of the national scenic byways, demonstrating at least two intrinsic qualities of national significance.