

The logo for Scenic America, featuring the word "Scenic" in a white script font and "America" in a white serif font, both underlined. The background is a scenic view of a road winding through a forest with vibrant autumn foliage in shades of red, orange, and yellow, with misty mountains in the distance.

Scenic America

# NATIONAL SCENIC BYWAYS PROGRAM: NEW HAMPSHIRE

## ABOUT THE NATIONAL SCENIC BYWAYS PROGRAM

The National Scenic Byways Program, established by Congress in 1991, recognizes historic, scenic, and culturally important roads, all of which promote economic development and tourism in communities around the U.S. There are more than 1,200 byways in all 50 states.

**New Hampshire** is home to 20 scenic byways, totaling over 1,000 miles and showcasing a variety of beaches, mountain ranges, agricultural places, and historic sites; all of which highlight New Hampshire's unique character. As one of the nation's original 13 colonies, the scenic byways highlight many renowned landmarks special to the state, including Fort Constitution (formerly known as Fort William and Mary) and Fort Stark, located along the Coastal Byway.

## KEY POINTS

- New Hampshire is home to 3 national scenic byways and 17 state scenic byways.
- A study found that in 2019 alone, the direct travel impacts resulted in \$5.9 billion in total spending and \$321 million in tax revenue.
- In the White Mountain region, 10,600 jobs were supported by travel spending in 2019.

20

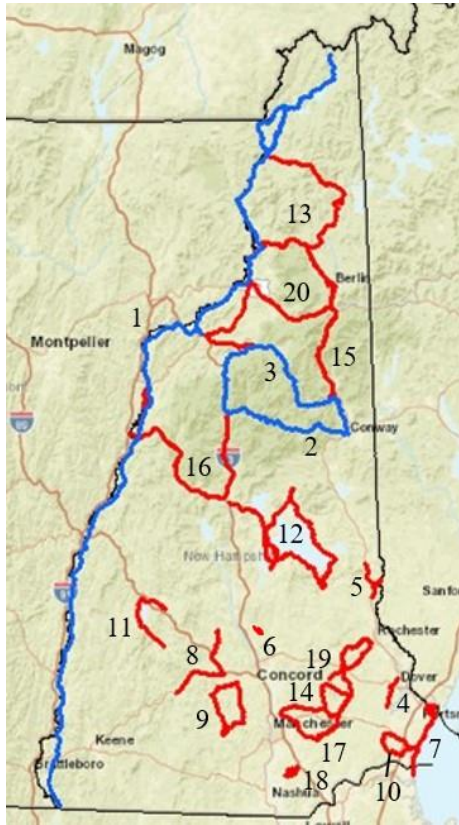
NEW HAMPSHIRE IS HOME TO  
20 SCENIC BYWAYS



## NEW HAMPSHIRE TRAVEL INDUSTRY FACTS

- > DIRECT TRAVEL RESULTED IN \$5.9 BILLION IN TOTAL SPENDING
- > WHITE MOUNTAIN REGION ALONE HAS 10,600 JOBS SUPPORTED BY TOURISM

Images: Kancamagus Highway (top), White Mountain Trail credit: [National Archives](#) (column)



## SCENIC BYWAYS IN NEW HAMPSHIRE

### NATIONAL SCENIC BYWAYS

1. CONNECTICUT RIVER SCENIC BYWAY
2. KANAMAGUS HIGHWAY
3. WHITE MOUNTAIN TRAIL

### STATE SCENIC BYWAYS

4. MILLS SCENIC AND CULTURAL BYWAY
5. BRANCH RIVER VALLEY SCENIC BYWAY
6. CANTERBURY BYWAY
7. COASTAL BYWAY
8. CURRIER AND IVES TRAIL
9. GENERAL JOHN STARK BYWAY
10. AMERICAN INDEPENDENCE BYWAY
11. LAKE SUNAPEE SCENIC AND CULTURAL BYWAY
12. LAKES REGION TOUR
13. MOOSE PATH TRAIL
14. OLD STAGECOACH BYWAY
15. PRESIDENTIAL RANGE BYWAY
16. RIVER HERITAGE TRAIL
17. ROBERT FROST SCENIC BYWAY
18. THE APPLEWAY
19. UPPER LAMPREY SCENIC BYWAY
20. WOODLAND HERITAGE TRAIL

All scenic byways exhibit one or more of six core intrinsic qualities — scenic, historic, recreational, cultural, archaeological, or natural. For a road to be named a **national scenic byway**, it must first be designated a **state, tribal, or federal agency scenic byway**. Once achieving that, a road may apply for **national scenic byway** designation, but its intrinsic quality must be of regional significance. **All-American Roads** are the very best of the national scenic byways, demonstrating at least two intrinsic qualities of national significance.



**NEW HAMPSHIRE BYWAYS PROVIDE ACCESS TO THE STATE'S MOST SPECTACULAR PUBLIC LANDS INCLUDING:**

- > 2 NATIONAL PARKS
- > 93 STATE PARKS
- > 1 NATIONAL HERITAGE AREA
- > 23 NATIONAL HISTORIC LANDMARKS
- > 117 STATE FORESTS



Images: General John Stark Byway credit: [GSB.org](http://GSB.org) (top), Currier and Ives Scenic Byway credit: [C&I.org](http://C&I.org) (bottom)