

The logo for Scenic America, featuring the words "Scenic America" in a white, elegant script font. The background of the entire page is a scenic photograph of a winding road through a forest with vibrant autumn foliage, overlooking a large blue lake under a clear sky. A white birch tree is in the foreground on the right side.

NATIONAL SCENIC BYWAYS PROGRAM: MINNESOTA

ABOUT THE NATIONAL SCENIC BYWAYS PROGRAM

The National Scenic Byways Program, established by Congress in 1991, recognizes historic, scenic, and culturally important roads, all of which promote economic development and tourism in communities around the U.S. There are more than 1,200 byways in all 50 states.

Minnesota established the Minnesota Scenic Byways Commission in 1992 as a collaboration between the Department of Transportation, Department of Natural Resources, the Minnesota Historical Society, and the Department of Tourism. The main goal of the program's enactment was to increase economic growth via tourism in communities through which byways run.

KEY POINTS

- Minnesota is home to 22 scenic byways, including 2 All-American Roads, 6 national scenic byways, and 16 state scenic byways.
- Visitors directly spent \$15.3 billion in 2019, supporting over 270,000 jobs and paying \$5.8 billion in wages.
- National parks generated \$86.6 million in total economic output in gateway communities in 2019, supporting 875 jobs and \$26.6 million in labor income.
- A University of Minnesota study found that the Paul Bunyan National Scenic Byway annually generates nearly \$22 million in visitor spending.

22

MINNESOTA IS HOME TO
22 SCENIC BYWAYS

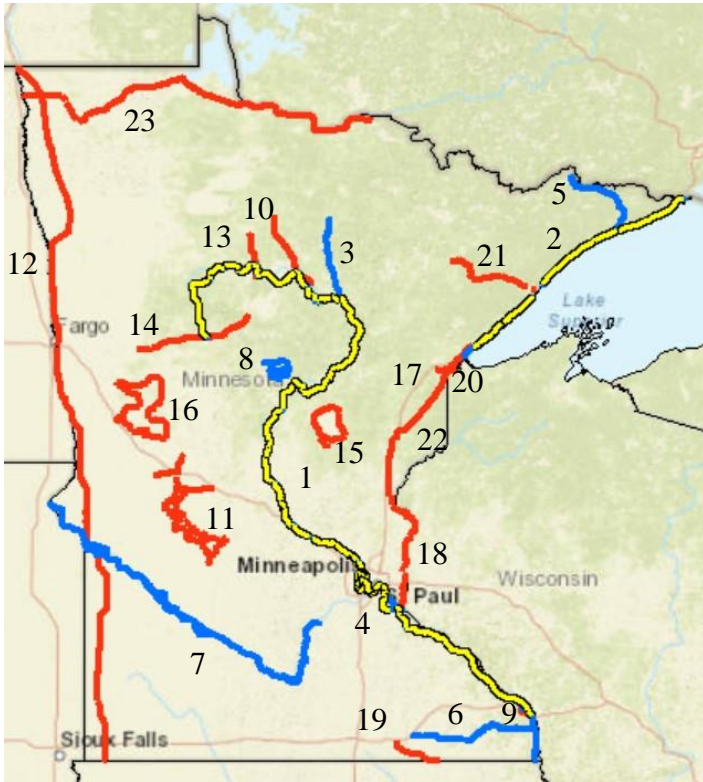


MINNESOTA TRAVEL INDUSTRY FACTS

> SUPPORTS OVER 270,000
JOBS

> VISITOR EXPENDITURES SAVES
RESIDENTS \$625 IN TAXES
ANNUALLY

Images: John A. Latsch State Park – Great River Road credit: [Wikimedia Commons](#) (top), Historic Bluff Country Scenic Byway credit: [National Archives](#) (column)



SCENIC BYWAYS IN MINNESOTA

ALL-AMERICAN ROADS



1. GREAT RIVER ROAD
2. NORTH SHORE SCENIC DRIVE

NATIONAL SCENIC BYWAYS



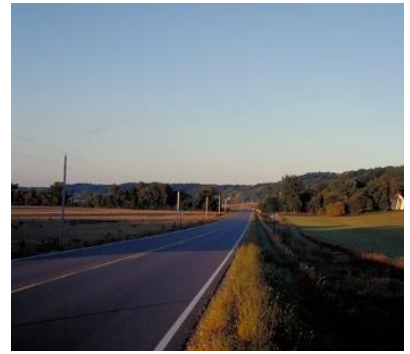
3. EDGE OF THE WILDERNESS
4. GRAND ROUNDS SCENIC BYWAY
5. GUNFLINT TRAIL SCENIC BYWAY
6. HISTORIC BLUFF COUNTRY SCENIC BYWAY
7. MINNESOTA RIVER VALLEY SCENIC BYWAY
8. PAUL BUNYAN SCENIC BYWAY

STATE SCENIC BYWAYS



9. APPLE BLOSSOM DRIVE
10. AVENUE OF PINES
11. GLACIAL RIDGE TRAIL
12. HISTORIC HIGHWAY 75 KING OF TRAILS SCENIC BYWAY
13. LADY SLIPPER SCENIC BYWAY
14. LAKE COUNTRY SCENIC BYWAY
15. LAKE MILLE LACS SCENIC BYWAY
16. OTTER TRAIL SCENIC BYWAY
17. SAINT CROIX SCENIC BYWAY
18. SHOOTING STAR SCENIC BYWAY
19. SKYLINE DRIVE SCENIC BYWAY
20. SUPERIOR NATIONAL FOREST SCENIC BYWAY
21. VETERANS EVERGREEN MEMORIAL DRIVE
22. WATERS OF THE DANCING SKY SCENIC BYWAY

All scenic byways exhibit one or more of six core intrinsic qualities — scenic, historic, recreational, cultural, archaeological, or natural. For a road to be named a **national scenic byway**, it must first be designated a **state, tribal, or federal agency scenic byway**. Once achieving that, a road may apply for **national scenic byway** designation, but its intrinsic quality must be of regional significance. **All-American Roads** are the very best of the national scenic byways, demonstrating at least two intrinsic qualities of national significance.



**MINNESOTA BYWAYS
PROVIDE ACCESS TO THE
STATE'S MOST
SPECTACULAR PUBLIC
LANDS INCLUDING:**

- > 1 NATIONAL PARK
- > 66 STATE PARKS
- > 2 NATIONAL MONUMENTS
- > 2 NATIONAL RIVERS
- > 1 NATIONAL SCENIC TRAIL
- > 58 STATE FORESTS



Images: Minnesota River Valley Scenic Byway credit: [National Archives](#) (top), Edge of the Wilderness credit: [National Archives](#) (bottom)