

The logo for Scenic America, featuring the words "Scenic America" in a white, elegant script font against a background of a scenic landscape with a bridge and a river.

# NATIONAL SCENIC BYWAYS PROGRAM: IDAHO

## ABOUT THE NATIONAL SCENIC BYWAYS PROGRAM

The National Scenic Byways Program, established by Congress in 1991, recognizes historic, scenic, and culturally important roads, all of which promote economic development and tourism in communities around the U.S. There are more than 1,200 byways in all 50 states.

**Idaho** started a state scenic byway program over a decade earlier, in 1977. The Idaho Transportation Department is the main administrator for the program, but it is also guided by the Idaho Byways Advisory Committee, which includes state and national agency representatives, local business leaders, and community members. Byway designations must be initiated and supported by local communities. Two of the byways in Idaho, the International Selkirk Loop and the Northwest Passage Scenic Byway, have been given the highest honor a road can have, being named All-American Roads.

## KEY POINTS

- Idaho is home to 6 national scenic byways and 26 state scenic byways.
- Idaho's scenic byways connect many outdoor recreation areas across the state, including National Parks and U.S. Forest Service Lands.
- Visitors spent an estimated \$37.4 million in local gateway regions while visiting federal lands in Idaho.
- Travel and tourism is Idaho's third-largest industry.

32

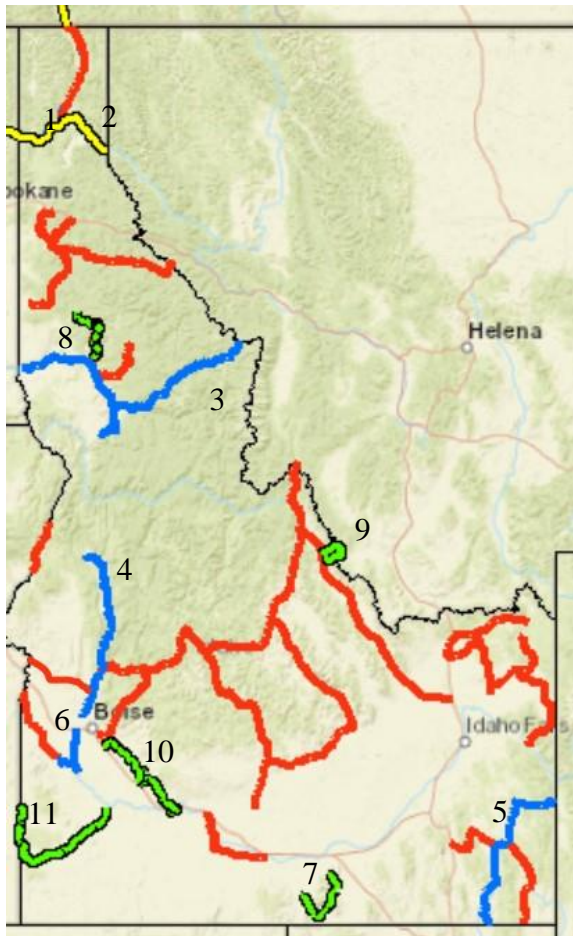
IDAHO IS HOME TO  
32 SCENIC BYWAYS



## IDAHO TRAVEL INDUSTRY FACTS

- > SUPPORTS 46,000 JOBS
- > NEARLY \$475 MILLION IN ANNUAL TAX REVENUE SAVES IDAHO HOUSEHOLDS \$749

Images: Payette River Scenic Byway (top),  
Pioneer Historic Byway (right column)



## SCENIC BYWAYS IN IDAHO

### ALL-AMERICAN ROADS



1. INTERNATIONAL SELKIRK LOOP
2. NORTHWEST PASSAGE SCENIC BYWAY

### NATIONAL SCENIC BYWAYS



3. PAYETTE RIVER SCENIC BYWAY
4. PEND OREILLE SCENIC BYWAY
5. PIONEER HISTORIC BYWAY
6. WESTERN HERITAGE HISTORIC BYWAY

### STATE SCENIC BYWAYS



12-32. VISIT THE [ONLINE PROGRAM GUIDE](#) FOR THE COMPLETE LIST OF IDAHO STATE BYWAYS

### FEDERAL AGENCY BYWAYS



7. CITY OF ROCKS BACK COUNTRY BYWAY
8. ELK RIVER BACK COUNTRY BYWAY
9. LEWIS AND CLARK BACK COUNTRY BYWAY
10. MAIN OREGON TRAIL BACK COUNTRY
11. OWYHEE UPLANDS BACK COUNTRY



IDAHO BYWAYS PROVIDE ACCESS TO THE STATE'S MOST SPECTACULAR PUBLIC LANDS INCLUDING:

- > 1 NATIONAL PARK
- > 23 STATE PARKS
- > 10 NATIONAL FORESTS
- > 5 NATIONAL RECREATION TRAILS
- > 1 NATIONAL RECREATION AREA



Images: City of Rocks Backcountry Byway credit: NPS (top), Teton Scenic Byway Sign credit: [Jimmy Wayne](#) (bottom)

All scenic byways exhibit one or more of six core intrinsic qualities — scenic, historic, recreational, cultural, archaeological, or natural. For a road to be named a **national scenic byway**, it must first be designated a **state, tribal, or federal agency scenic byway**. Once achieving that, a road may apply for **national scenic byway** designation, but its intrinsic quality must be of regional significance. **All-American Roads** are the very best of the national scenic byways, demonstrating at least two intrinsic qualities of national significance.