



Scenic America



NATIONAL SCENIC BYWAYS PROGRAM: MAINE

ABOUT THE NATIONAL SCENIC BYWAYS PROGRAM

The National Scenic Byways Program, established by Congress in 1991, recognizes historic, scenic, and culturally important roads, all of which promote economic development and tourism in communities around the U.S. There are more than 1,200 byways in all 50 states.

Maine boasts one of the oldest scenic byway programs in the nation. Maine's fourteen Scenic Byways provide Mainers and visitors with spectacular views on the state's natural landscape. In addition to encouraging tourism, Maine's Scenic Byways also act as an important economic developmental tool for the state's more rural communities.

KEY POINTS

- Maine is home to fourteen scenic byways, including one All-American Road, six National Scenic Byways, and seven State Scenic Byways.
- The tourism industry supported over 116,000 jobs in 2019, making up around 17% of the state's employment.
- Acadia National Park, serviced by Acadia All-American Road, generated over \$500 million in economic output in 2017, supporting over 4,000 jobs in gateway communities.
- Maine's national parks generated \$560 million in total economic output in gateway communities in 2019.

14

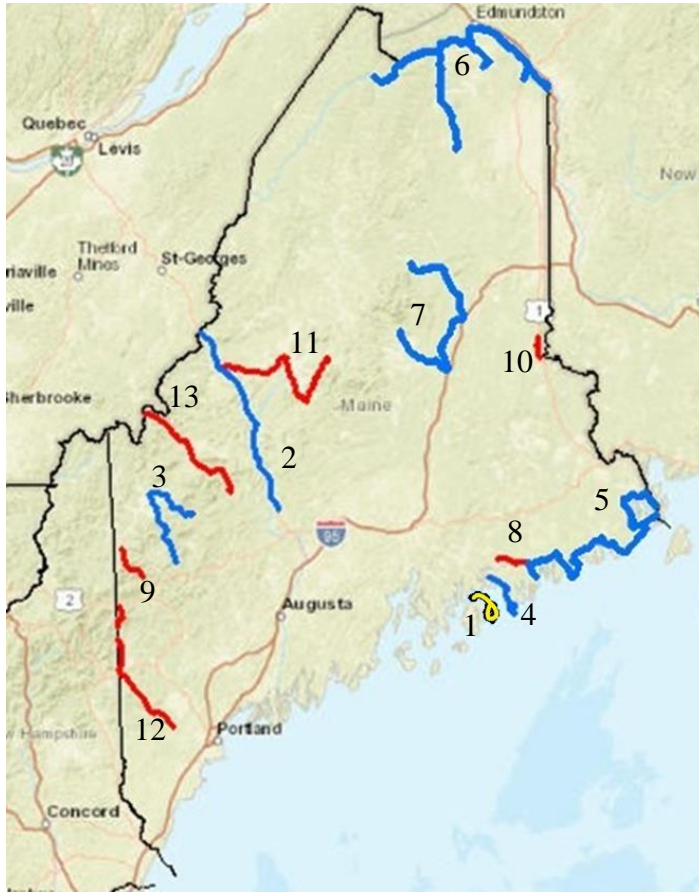
MAINE IS HOME TO
14 SCENIC BYWAYS



MAINE TRAVEL INDUSTRY FACTS

- > SUPPORTS OVER 116,000 JOBS
- > TRAVEL CONTRIBUTES MORE THAN \$2.8 BILLION IN EARNINGS TO MAINE HOUSEHOLDS

Images: Schoodic Peninsula credit: [NPS](#) (top), Bold Coast Scenic Byway credit: [Ron Cogswell](#) (column)



MAINE BYWAYS PROVIDE ACCESS TO THE STATE'S MOST SPECTACULAR PUBLIC LANDS INCLUDING:

- > ACADIA NATIONAL PARK
- > WHITE MOUNTAINS NATIONAL FOREST
- > 8 STATE PARKS
- > 18 NATIONAL RECREATIONAL TRAILS
- > 2 WILDLIFE REFUGES

SCENIC BYWAYS IN MAINE

ALL-AMERICAN ROADS

1. ACADIA ALL-AMERICAN ROAD

NATIONAL SCENIC BYWAYS

2. THE BOLD COAST SCENIC BYWAY
3. KATAHDIN WOODS AND WATER BYWAY
4. OLD CANADA ROAD
5. RANGELEY LAKES
6. SAINT JOHN VALLEY
7. SCHOODIC SCENIC BYWAY

STATE SCENIC BYWAYS

8. BLACKWOODS (ROUTE 182)
9. FISH RIVER BYWAY (ROUTE 11)
10. GRAFTON NOTCH BYWAY
11. MILLION DOLLAR VIEW BYWAY (ROUTE 1)
12. MOOSEHEAD LAKE SCENIC BYWAY
13. PEQUAWKET TRAIL (ROUTE 113)
14. STATE ROUTE 27 BYWAY



All scenic byways exhibit one or more of six core intrinsic qualities – scenic, historic, recreational, cultural, archaeological, or natural. The first step of any byway is to be named as a **State Scenic Byway** or a **Federal Agency Scenic Byway**. Once achieving that, a road may apply for a **National Scenic Byway** designation, but its intrinsic quality must be of regional significance. **All-American Roads** are the very best of the National Scenic Byways, demonstrating at least two intrinsic qualities of national significance.

Images: Rangeley Lakes Scenic Byway credit: [Thomas A. Pearl](#) (top), Acadia National Park credit: [Davis Brossard](#) (bottom)