

South Carolina

The National Scenic Byways Program

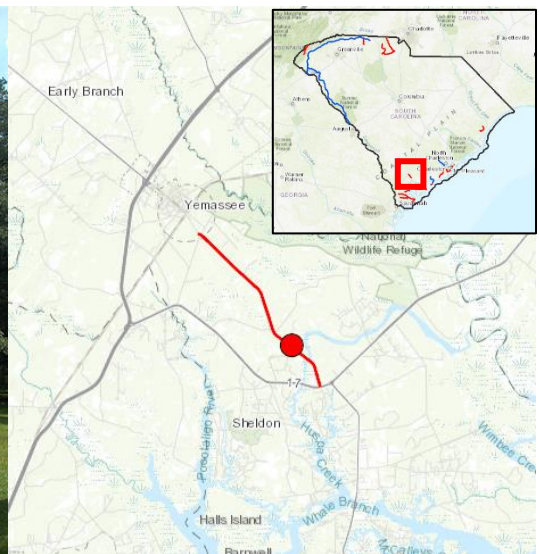
The National Scenic Byways Program, established by Congress in 1991, recognizes historic, scenic and culturally important roads, all of which promote economic development and tourism in communities around the U.S. The South Carolina Department of Transportation (SCDOT) partnered with the South Carolina Scenic Highways Committee in 1994. The creation of the committee stemmed from Act 484, 1994, and was then amended by Act 285, 1996. The SC [Scenic Highways committee](#) consists of 11 members ranging from the Director of Tourism to the Director of the Department of Parks. It serves in place until the reelection of a new Governor every 2 years. The committee plays the most influential role in the development of criteria for the designation of scenic byways across the state. To date, the committee has designated 21 scenic byways in South Carolina, stretching over 450 miles.

Key points:

- South Carolina boasts four National Scenic Byways and 17 State Scenic Byways.
- Scenic byways are a key part of the South Carolina tourism industry, a \$23.8 billion industry that generates \$1.8 billion in state and local taxes.
- The [Savannah River](#) National Scenic Byway is over 100 miles long and stretches through 4 counties and 3 major lakes near the Western tip of the state.
- Cowpens National Battlefield State Scenic Byway is home to the [Battle of Cowpens \(1781\)](#), which started Cornwallis on his journey to Yorktown.



Credit: SC DOT



Old Sheldon Church Road Scenic Byway offers a pleasant blend of natural beauty, historic character, and cultural insight.



Scenic Byways in South Carolina

National Scenic Byways in South Carolina:

- [Ashley River Road](#) (1)
- [Cherokee Foothills](#) (2)
- [Edisto Island](#) (3)
- [Savannah River](#) (4)

Map Key:

The numbers following each byway name above match with the respective byway's numbered location on the map.

State Scenic Byways in South Carolina:

- [Bohicket Road](#) (5)
- [Cowpens Battlefield](#) (6)
- [Edisto Beach](#) (7)
- [Falling Waters](#) (8)
- [Fort Johnson Road](#) (9)
- [Hilton Head Scenic Highway](#) (10)
- [Hilton Head Island Scenic Highway](#) (11)
- [Long Point Road](#) (12)
- [Mathis Ferry Road](#) (13)
- [May River](#) (14)
- [McTeer Bridge](#) (15)
- [Old Sheldon Church](#) (16)
- [Plantersville Scenic Byway](#) (17)
- [Riverland Drive](#) (18)
- [SC 170 Scenic Highway](#) (19)
- [US 21 Scenic Highway](#) (20)
- [Western York Scenic Byway](#) (21)