

New Hampshire

The National Scenic Byways Program

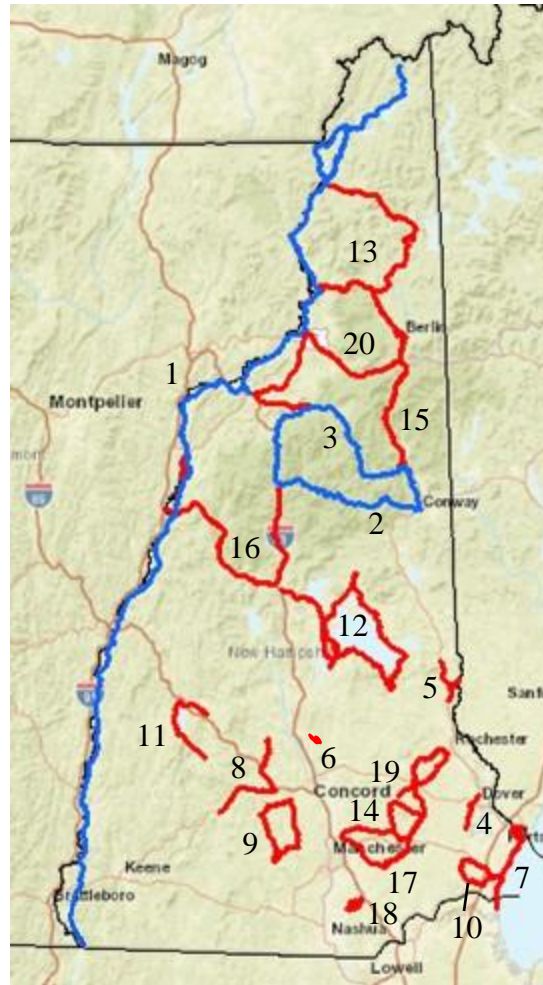
The National Scenic Byways Program, established by Congress in 1991, recognizes historic, scenic, and culturally important roads and promotes tourism and economic development in nearby communities. New Hampshire is home to 20 scenic byways, totaling over [1,000 miles](#) and showcasing a variety of beaches, mountain ranges, agricultural places, and historic sites, all of which highlight New Hampshire's unique character. As one of the Nation's original thirteen colonies, the scenic byways highlight many renowned landmarks special to the state, including Fort Constitution (formerly known as Fort William and Mary) and Fort Stark, located along the Coastal Byway.

Key points:

- New Hampshire is home to three National Scenic Byways and 17 State Scenic Byways.
- A study found that in 2019 alone, the direct travel impacts in New Hampshire resulted in [\\$5.9 billion](#) in total spending and [\\$321 million](#) in tax revenue.
- The [100](#) mile long White Mountain Trail National Scenic Byway highlights the beautiful White Mountain National Forest. In addition, the White Mountain region had [10,600](#) jobs supported by travel spending in 2019.
- The National Parks Service reports that in 2018, 35,200 visitors spent an estimated [\\$1.8 million](#) while visiting New Hampshire's National Park Service lands.



Known as one of the best fall foliage areas in the country, Kancamagus Highway offers visitors breathtaking views, rich history and a wealth of culture.



Map Key:

The numbers following each byway name match with the respective byway's numbered location on the map.

Scenic Byways in New Hampshire

National Scenic Byways in New Hampshire:

- [Connecticut River Scenic Byway](#) (1)
- [Kancamagus Highway](#) (2)
- [White Mountain Trail](#) (3)

State Scenic Byways in New Hampshire:

- [Mills Scenic and Cultural Byway](#) (4)
- [Branch River Valley Scenic Byway](#) (5)
- [Canterbury Shaker Village](#) (6)
- [Coastal Byway](#) (7)

- [Currier and Ives Trail](#) (8)
- [General John Stark Byway](#) (9)
- [American Independence Byway](#) (10)
- [Lake Sunapee Scenic and Cultural Byway](#) (11)
- [Lakes Region Tour](#) (12)
- [Moose Path Trail](#) (13)
- [Old Stagecoach Byway](#) (14)
- [Presidential Range Trail](#) (15)
- [River Heritage Trail](#) (16)
- [Robert Frost Scenic Byway](#) (17)
- [The Appleway](#) (18)
- [Upper Lamprey Scenic Byway](#) (19)
- [Woodland Heritage Trail](#) (20)