

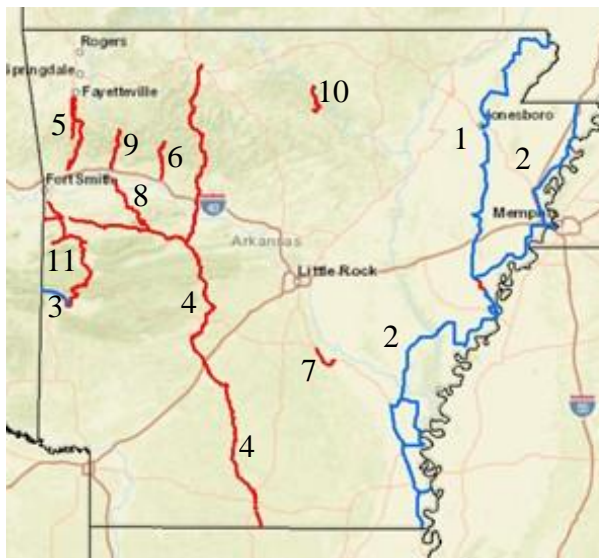
Arkansas

The National Scenic Byways Program

The National Scenic Byways Program, established by Congress in 1991, recognizes historic, scenic, and culturally important roads, all of which promote economic development and tourism in communities around the country. Arkansas established a state scenic byways program with the designation of the Scenic 7 Byway in 1993. From Civil War Battlefields, regional wildlife and charming towns, Arkansas's scenic byways display the state's visual and cultural beauty. Arkansas is home to eleven scenic byways, three of which are federally designated including the Great River Road, an All-American Road. The Great River Road was established as a parkway alongside the Mississippi River and stretches 362 miles through Arkansas. Travelers can experience this impressive natural landscape while better understanding the Mississippi River's role in shaping the nation.

Key points:

- Arkansas boasts eleven Scenic Byways, including three National Scenic Byways and eight State Scenic Byways.
- Travel and tourism are the second largest industry in Arkansas and a [2019 report](#) shows that travel generated \$1.42 billion payroll, supporting 68,955 jobs.
- The same report identifies roadways and the physical beauty of the state as some of the key drivers for the success of the industry.
- In 2019, tourism in Arkansas produced [\\$429 million](#) in state tax revenue.



Scenic Byways in Arkansas

National Scenic Byways in Arkansas:

- [Crowley's Ridge Parkway](#) (1)
- [Great River Road](#) (2)*
- [Talimena Scenic Drive](#) (3)

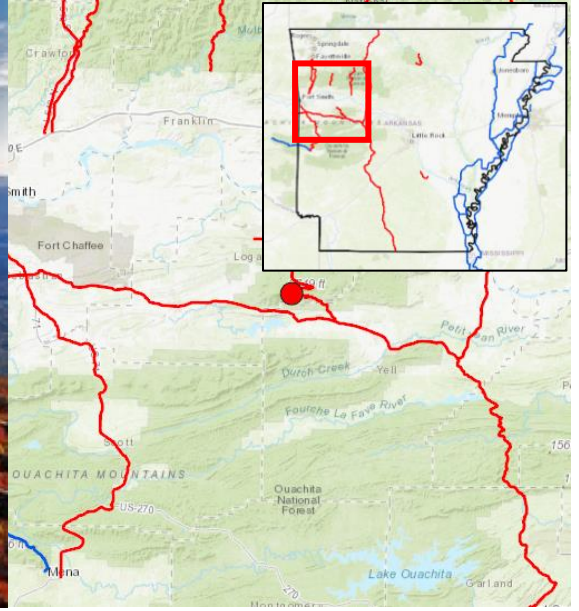
State Scenic Byways in Arkansas:

- [Arkansas Scenic 7 Byway](#) (4)
- [Boston Mountain Scenic Loop](#) (5)
- [Highway 21, Ozark Highlands Scenic Byway](#) (6)
- [Interstate 530](#) (7)
- [Mount Magazine Scenic Byway](#) (8)
- [Pig Trail Scenic Byway](#) (9)
- [Sylamore Scenic Byway](#) (10)
- [West-Northwest Scenic Byway](#) (11)

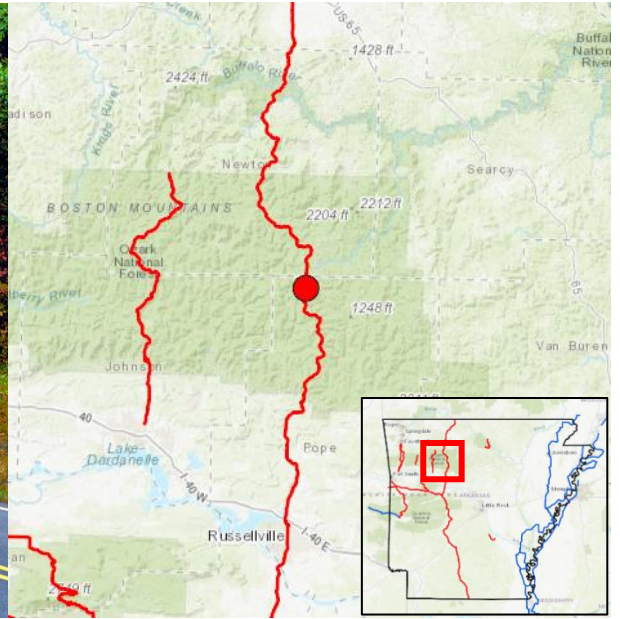
Map Key:

The numbers following each byway name above match with the respective byway's numbered location on the map.

*Asterisk denotes an All-American Road.



Mount Magazine Scenic Byway offers access to a multitude of hiking trails.



Arkansas 7 Scenic Byway, ranked one of the most scenic drives in America, offers stunning views of Arkansas' picturesque forests.