

West Virginia

The National Scenic Byways Program

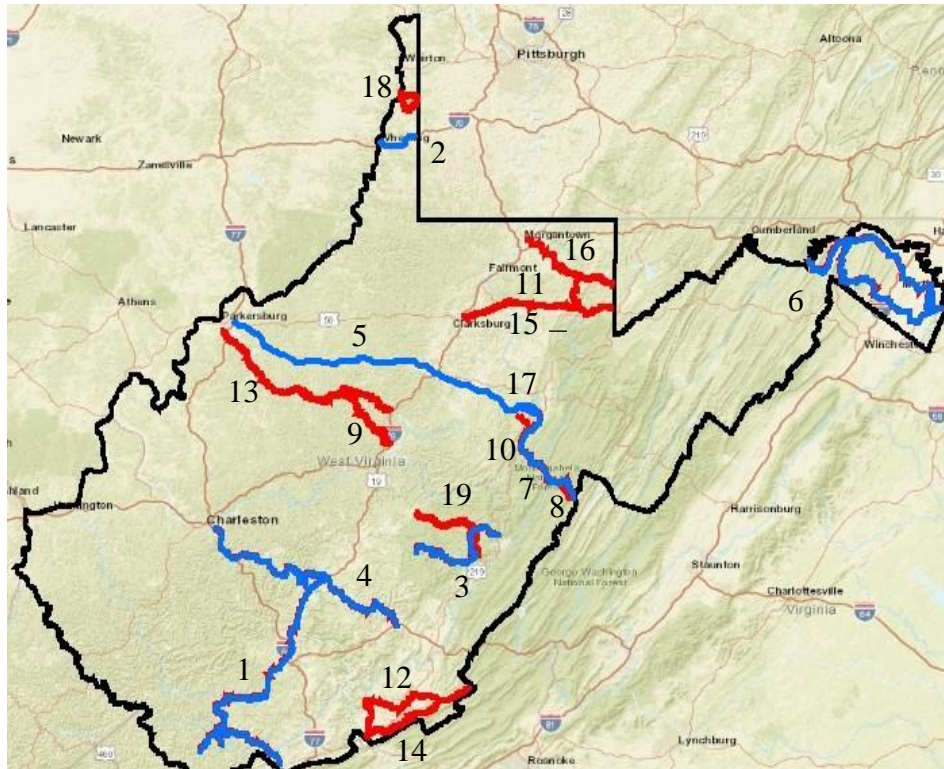
The National Scenic Byways Program, established by Congress in 1991, recognizes historic, scenic, and culturally important roads, all of which promote economic development and tourism in communities around the country. However, this initiative is predated by West Virginia's own State Scenic Highway Program, which began in 1988 with the designation of part of the Midland Trail as a State Scenic Highway. West Virginia boasts six [National Scenic Byways](#), including the Coal Heritage Trail and the Highland Scenic Highway. The Coal Heritage trail offers a look into the state's industrial development, while the Highland Scenic Highway offers a vibrant contrast, as it showcases the natural beauty of West Virginia's Monongahela National Forest.

Key points:

- West Virginia is home to 19 Scenic Byways, including six National Scenic Byways and 13 State and Other Scenic Byways.
- Scenic Byways are found in 49 states, and America has over 1,273 State and National Scenic Byways in total.
- The Coal Heritage Trail is home to West Virginia's first geocache trail, making it a draw for thousands of [geocaching enthusiasts](#).
- The Coal Heritage Trail is an integral part of the Coal Heritage Area, which generates [\\$207 million](#) in economic impact, supports nearly 3,000 jobs and generates \$16.8 million in tax revenue.
- In 2018, the [tourism and travel industry](#) in West Virginia generated \$4.6 billion in spending, growing at a year-over-year rate of 6.5%; the industry contributed \$534.5 million in local and state taxes saving the average household in West Virginia \$720 annually



Recognizing the impact of West Virginia's coal industry, the Coal Heritage Trail provides access to a region that helped fuel the nation's rapid industrial growth.



Scenic Byways in West Virginia

National Scenic Byways in West Virginia:

- [Coal Heritage Trail](#) (1)
- [Historic National Road](#) (2)*
- [Highland Scenic Highway](#) (3)
- [The Midland Trail](#) (4)
- [Staunton-Parkersburg Turnpike](#) (5)
- [Washington Heritage Trail](#) (6)

Map Key:

The numbers following each byway name above match the byway's numbered location on the map. An asterisk denotes an All-American Road.

State and Other Scenic Byways in West Virginia:

- [Back Mountain State Backway](#) (7)
- [Camp Allegheny State Backway](#) (8)
- [Cedar Creek Road State Backway](#) (9)
- [Cheat Mountain State Backway](#) (10)
- [Cheat River State Byway](#) (11)
- [Farm Heritage Road](#) (12)
- [Little Kanawha Parkway](#) (13)
- [Mountain's Shadow Trail State Backway](#) (14)
- [Northwestern Turnpike](#) (15)
- [Old Route 7 State Byway](#) (16)
- [Rich Mountain State Backway](#) (17)
- [Wellsburg-Bethany State Byway](#) (18)
- [Williams River State Backway](#) (19)