

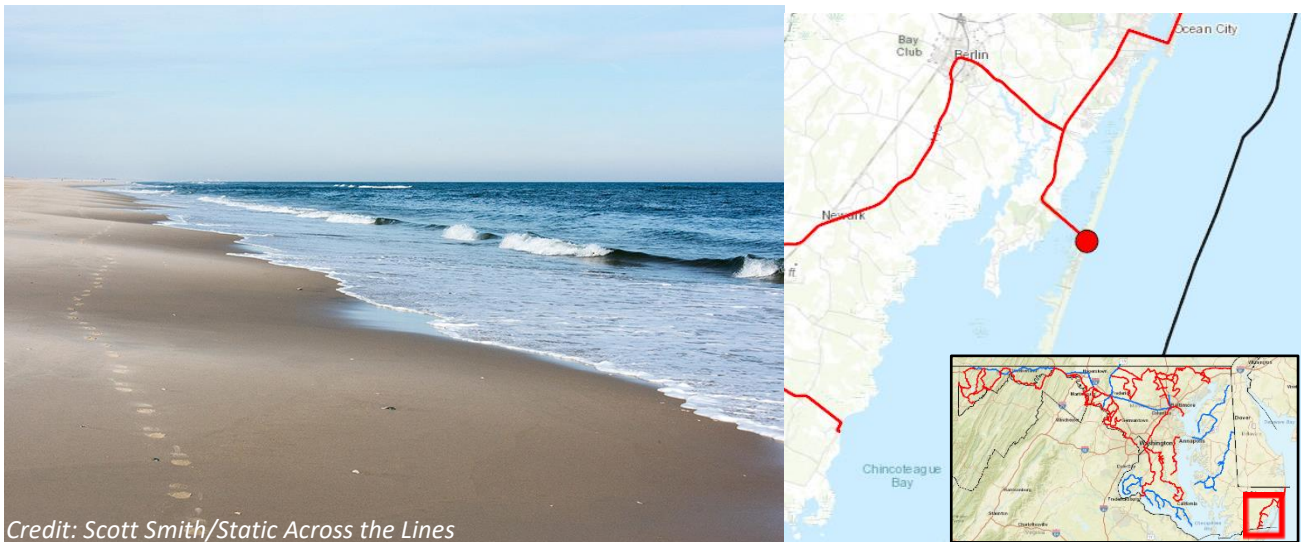
Maryland

The National Scenic Byways Program

The National Scenic Byways Program, established by Congress in 1991, recognizes historic, scenic and culturally important roads and promotes tourism and economic development in nearby communities. The first scenic route map for the state of Maryland was published in 1988 by the State Highway Administration (SHA). The goal of Maryland's Scenic Byways Program is ultimately to help and enhance communities along designated byway routes. Over the last 24 years the state has established 18 scenic byways that total [2,487 miles](#). The program has secured over [\\$17 million](#) in direct funding and [\\$3.4 million](#) in matched funding to implement priority projects along the state's scenic byway system.

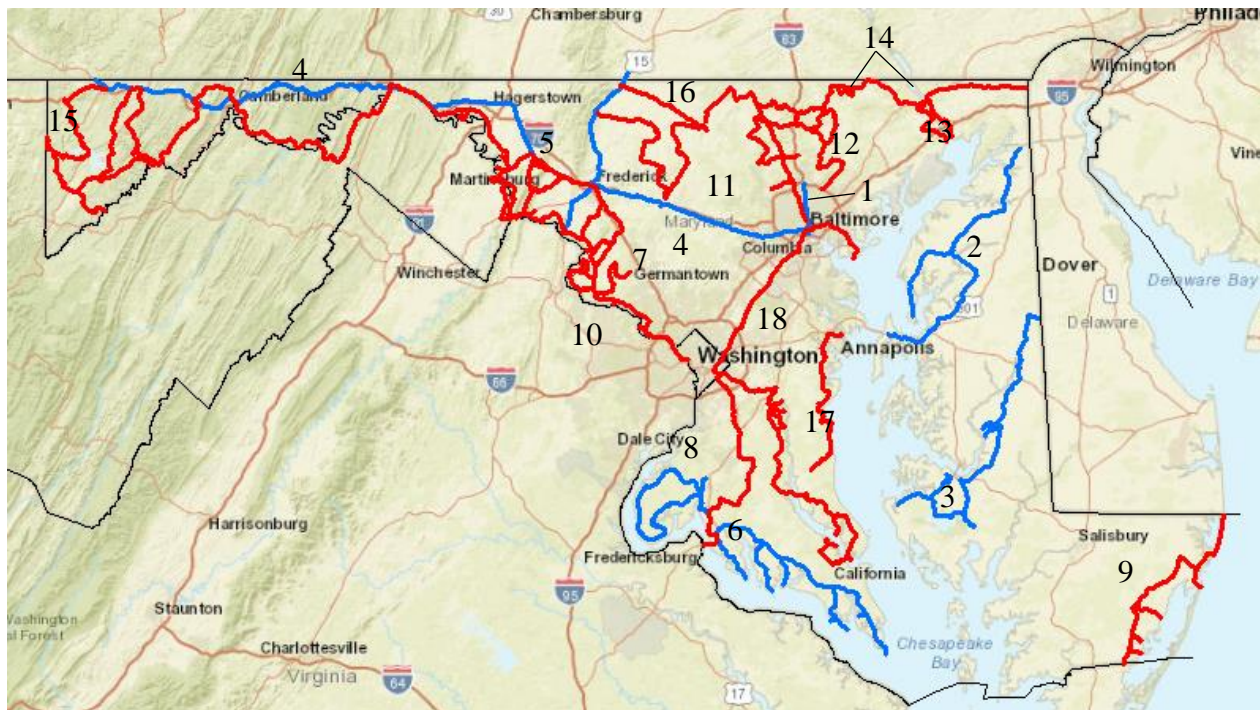
Key points:

- Maryland is home to six National Scenic Byways including three All-American Roads, and 12 State Scenic Byways.
- Tourism spending across the state totaled over [\\$18.6 billion](#) in 2019.
- This spending helps generate more than [\\$1.2 billion](#) in tax revenue for both state and local governments, saving each Marylander \$1,175 in taxes each year.
- The tourism industry also creates over [150,000](#) jobs across the state.
- The [Harriet Tubman Underground Railroad Byway](#), designated by Congress in 2014, stretches over 125 miles alongside both land and waterscape.
- The National Scenic Byways Program continues to grow, and 34 new National Scenic Byways and 15 new All-American Roads were announced in 2021.



Credit: Scott Smith/Static Across the Lines

Assateague Island National Seashore, located along Cape to Cape Scenic Byway, attracts locals and tourists alike.



Scenic Byways in Maryland

National Scenic Byways in Maryland:

- [Baltimore's Historic Charles Street](#) (1)
- [Chesapeake Country Scenic Byway](#) (2)*
- [Harriet Tubman Underground Railroad Byway](#) (3)*
- [Historic National Road](#) (4)*
- [Journey Through Hallowed Ground Byway](#) (5)
- [Religious Freedom Byway](#) (6)

State Scenic Byways in Maryland:

- [Antietam Campaign Scenic Byway](#) (7)
- [Booth's Escape Scenic Byway](#) (8)
- [Cape to Cape Scenic Byway](#) (9)
- [Chesapeake & Ohio Canal Scenic Byway](#) (10)
- [Falls Road](#) (11)
- [Horses & Hounds Scenic Byway](#) (12)
- [Lower Susquehanna Scenic Byway](#) (13)
- [Mason & Dixon Scenic Byway](#) (14)
- [Mountain Maryland Scenic Byway](#) (15)
- [Old Main Streets](#) (16)
- [Roots & Tides Scenic Byway](#) (17)
- [Star-Spangled Banner Scenic Byway](#) (18)

Map Key:

The numbers following each byway name above match with the respective byway's numbered location on the map.

*Asterisk denotes an All-American Road.