

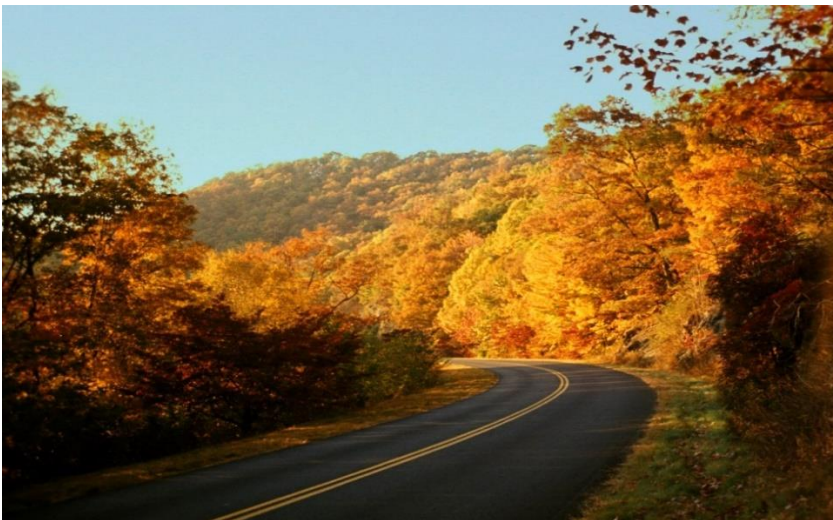
Virginia

The National Scenic Byway Program

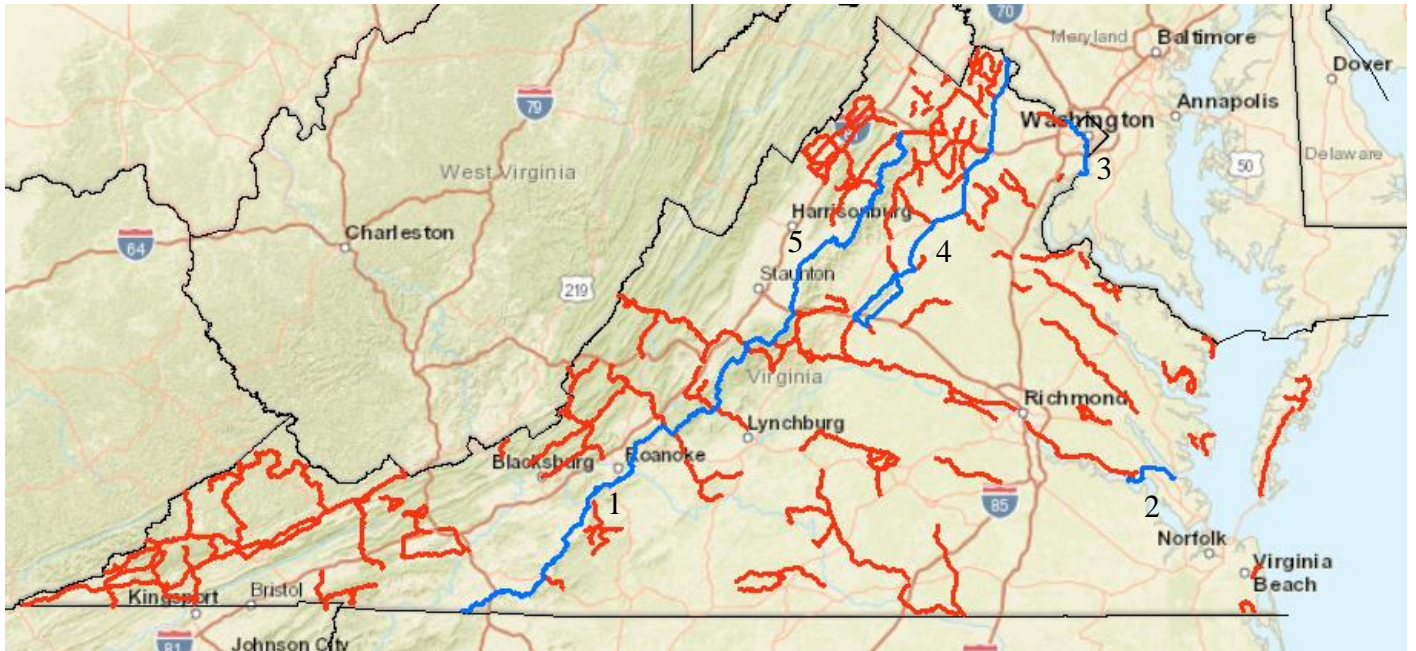
The National Scenic Byways Program, established by Congress in 1991, recognizes historic, scenic and culturally important roads, and promotes tourism and economic development in nearby communities. The Virginia General Assembly passed the State Scenic Highway and Virginia Byways Act in 1966. This act was created in response to the Statewide Comprehensive Outdoor Recreation Plan, known as the Virginia Outdoors Plan. Since the program's creation, over 3,500 miles of road have been designated. Virginia's byways include both state and national designated roads. The extensive byways system is managed by the Virginia Department of Transportation (VDOT). Virginia hosts five National Scenic Byways, including three All American Roads, the highest honor the Federal Highway Administration bestows upon byways, and has over 200 scenic byways in total.

Key points:

- Virginia has a total of 227 Scenic Byways, including 5 National Scenic Byways and 222 State Scenic Byways
- The NPS describes the [George Washington Memorial Parkway](#), an All American Road, as “dotted with memorials and places with nationally significant history”; traversing the parkway will bring you from Mount Vernon and Fort Hunt to the Jones Point Lighthouse to the Alexandria Waterfront to the US Marine Corps War Memorial
- According to the 2018 Virginia Outdoor Plan, [67%](#) of residents who responded said they enjoyed driving as a way to connect with nature
- [2018 domestic travel](#) in Virginia generated \$25.8 billion, a year-over-year increase of 4.4%, supporting 234,500 jobs within the state – 45 Virginia counties received over \$100 million in domestic travel expenditures and 43 counties realized one thousand or more jobs directly supported by domestic travelers



The Blue Ridge Parkway journeys through mesmerizing mountains and vistas, boasting a plethora of scenic views and recreational activities such as hiking.



Scenic Byways in Virginia

— National Scenic Byways

— State Scenic Byways

[Blue Ridge Parkway \(1\)*](#)

See [Virginia Department of Transportation](#) for Complete State Byways Information

[Colonial Parkway \(2\)*](#)

[George Washington Memorial Parkway \(3\)*](#)

[Journey Through Hallowed Ground Byway \(4\)](#)

[Skyline Drive \(5\)](#)

Map Key:

The numbers following each byway name above match with the respective byway's numbered location on the map.

*Asterisk denotes an All-American Road.