

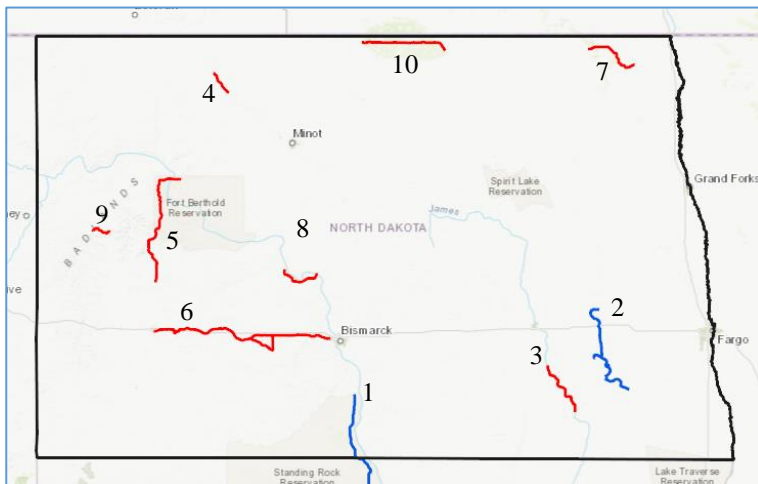
North Dakota

The National Scenic Byways Program

The National Scenic Byways Program, established by Congress in 1991, recognizes historic, scenic and culturally important roads, all of which promote economic development and tourism in communities around the country. Two National Scenic Byways wind their way through North Dakota: the Native American Scenic Byway, and the Sheyenne River Valley Scenic Byway. Both explore the lore and history of North Dakota and the Native American Tribes that still call this state home. North Dakota's Scenic Byways offer a unique and charming journey that contributes to local economies through tourism spending and calls attention to the historic sites, wildlife and starry nights that make up the character of the state. With two federal and eight state scenic byways located across the state, there are myriad ways for travelers to experience the unique beauty of North Dakota.

Key points:

- North Dakota is home to 10 Scenic Byways, including 2 National Scenic Byways and 8 State Scenic Byways.
- A [2017 study](#) shows that travelers spent \$3.1 billion dollars, made 22 million trips and contributed \$323 million in taxes to the state.
- The North Dakota Legislature has showed [continued interest](#) in increasing signing along scenic byways to call attention to local attractions, which will undoubtedly bolster local economies.
- Without state and local taxes paid by visitors to the state, each North Dakota household could potentially see a tax increase of [\\$1,092](#) to fill the gap.



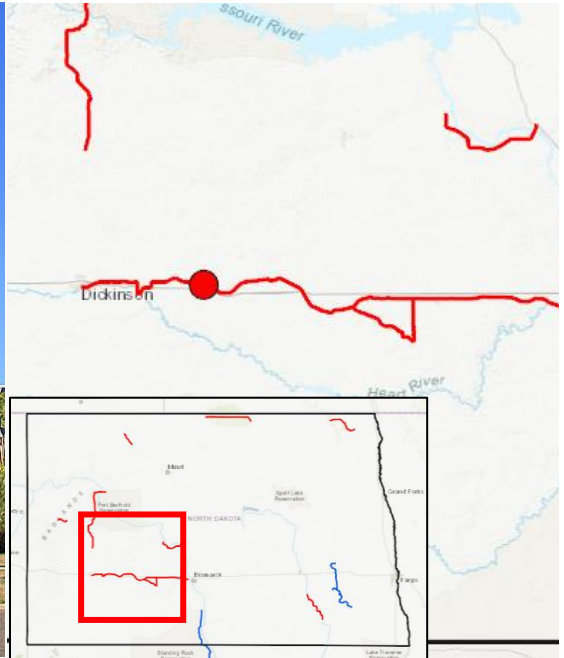
Scenic Byways in North Dakota

National Scenic Byways in North Dakota:

- [Native American Scenic Byway](#) (1)
- [Sheyenne River Valley Scenic Byway](#) (2)

State Scenic Byways in North Dakota:

- [Chan SanSan Scenic Backway](#) (3)
- [Des Lacs National Wildlife Refuge Scenic Backway](#) (4)
- [Killdeer Mountain Four Bears Scenic Byway](#) (5)
- [Old Red Old Ten Scenic Byway](#) (6)
- [Rendezvous Region Scenic Backway](#) (7)
- [Sakakawea Scenic Byway](#) (8)
- [Theodore Roosevelt National Park North Unit Scenic Byway](#) (9)
- [Turtle Mountain Scenic Byway](#) (10)



Saint Mary's Church is one of the many impressive historic landmarks along Old Red Old Ten Scenic Byway.



The calming landscapes around Des Lacs National Wildlife Refuge Scenic Byway offer superb wildlife-viewing, hunting, and hiking.