

West Virginia

The National Scenic Byways Program

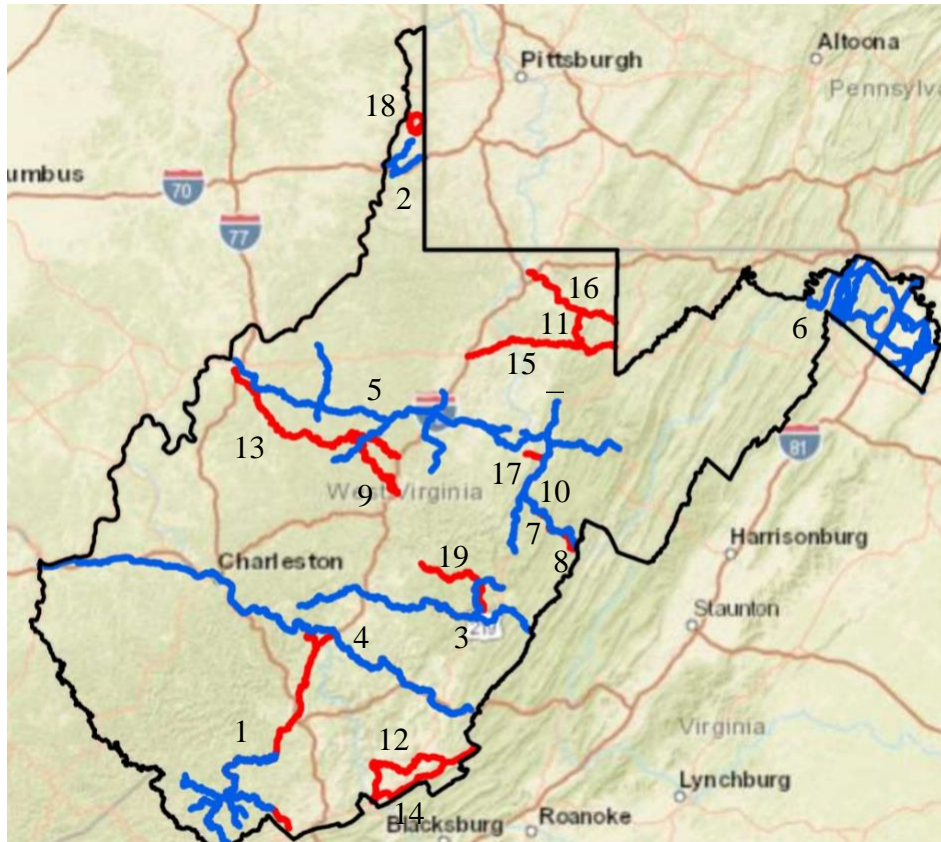
The National Scenic Byways Program, established by Congress in 1991, recognizes historic, scenic and culturally important roads, all of which promote economic development and tourism in communities around the country. However, this initiative is predated by West Virginia's own State Scenic Highway Program, which began in 1988 with the delegation of part of the Midland Trail as a State Scenic Highway. West Virginia boasts six National Scenic Byways, including the Coal Heritage Trail and the Highland Scenic Highway. The Coal Heritage trail offers a look into the state's quintessential industrial development while the Highland Scenic Highway offers a dynamic juxtaposition, as it showcases the natural beauty of West Virginia's Monongahela National Forest.

Key points:

- West Virginia boasts 19 Scenic Byways, including six National and 13 State Byways
- The Coal Heritage Trail is home to West Virginia's first geocache trail, making it a draw for the hundreds of thousands of [geocaching enthusiasts](#).
- The Coal Heritage Trail is an integral part of the Coal Heritage Area, which generates [\\$207 million](#) in economic impact, supports nearly 3,000 jobs and generates \$16.8 million in tax revenue.
- In 2018, the [tourism and travel industry](#) in West Virginia generated \$4.55 billion in spending, growing at a year-over-year rate of 6.5%, outpacing national growth by 58%; the industry contributed \$534.5 million in local and state taxes saving the average household in West Virginia \$720 annually



Recognizing the impact of West Virginia's coal industry, the Coal Heritage Trail provides access to a region that helped fuel the nation's rapid industrial growth.



Scenic Byways in West Virginia

Scenic Byways in West Virginia

— National Byways in West Virginia:

- [Coal Heritage Trail \(1\)](#)
- [Historic National Road \(2\)*](#)
- [Highland Scenic Highway \(3\)](#)
- [The Midland Trail \(4\)](#)
- [Staunton-Parkersburg Turnpike \(5\)](#)
- [Washington Heritage Trail \(6\)](#)

— State Byways/Backways in West Virginia:

- [Back Mountain State Backway \(7\)](#)
- [Camp Allegheny State Backway \(8\)](#)
- [Cedar Creek Road State Backway \(9\)](#)
- [Cheat Mountain State Backway \(10\)](#)
- [Cheat River State Byway \(11\)](#)
- [Farm Heritage Road \(12\)](#)
- [Little Kanawha Parkway \(13\)](#)
- [Mountain's Shadow Trail \(14\)](#)
- [Northwestern Turnpike \(15\)](#)
- [Old Route 7 State Byway \(16\)](#)
- [Rich Mountain State Backway \(17\)](#)
- [Wellsburg-Bethany State Byway \(18\)](#)
- [Williams River State Backway \(19\)](#)

Map Key:

The numbers following each byway name above match with the respective byway's numbered location on the map.

Asterisk denotes an All-American Road.