

Oregon

The National Scenic Byways Program

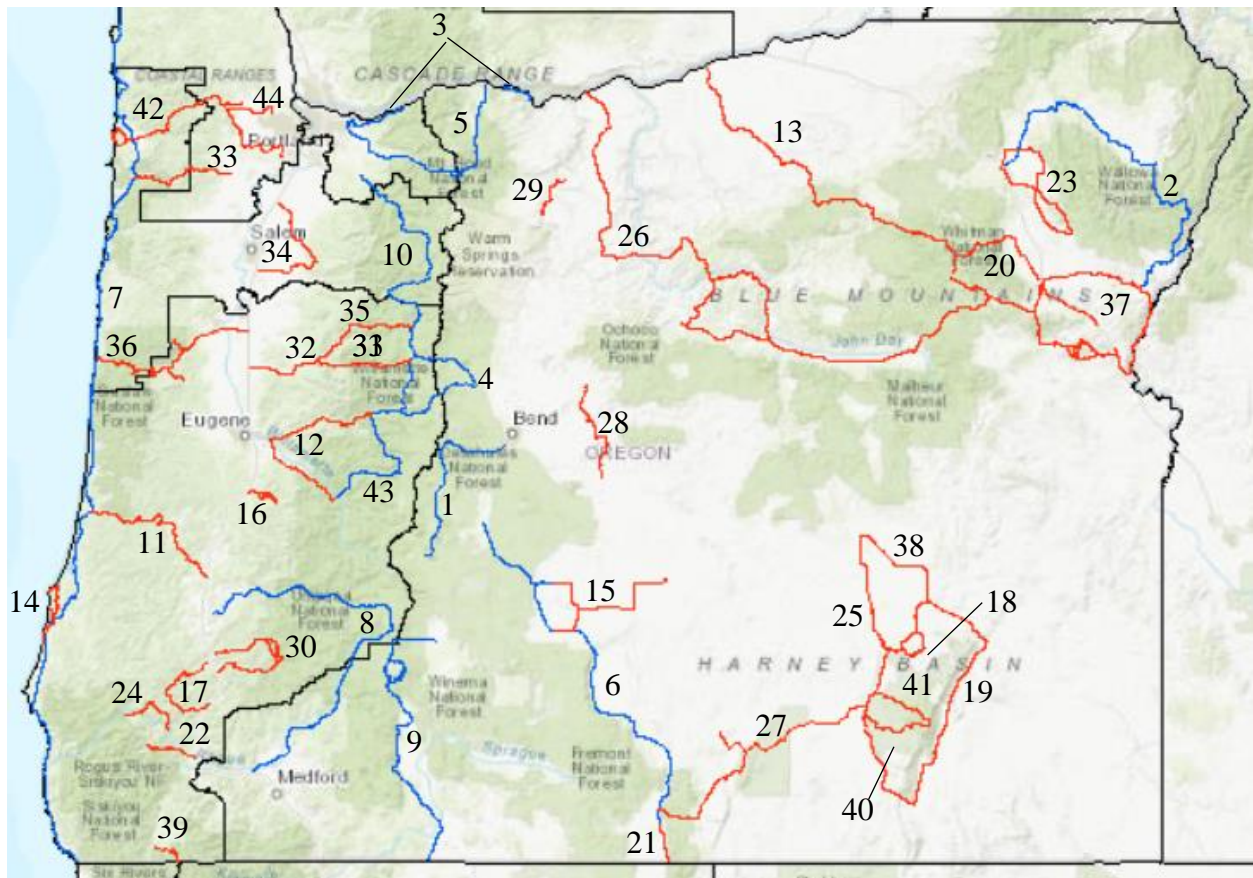
The National Scenic Byways Program, established by Congress in 1991, recognizes historic, scenic and culturally important roads, all of which promote economic development and tourism in communities around the U.S. The Scenic Byways in Oregon highlight a variety of breathtaking natural features, including lava flows, meadows, alpine lakes, and snow tipped peaks. The prevalence of American history attracts many visitors each year, as multiple of Oregon's Scenic Byways cross paths with the historic Oregon Trail, traveled by many famous frontiersmen such as Lewis and Clark and Kit Carson.

Key points:

- Oregon is home to 10 National Scenic Byways and 34 State Scenic Byways.
- A 2018 study found that in totality, the Oregon travel industry employed a total of [115,400](#) people.
- Research indicates that travel-generated employment serves a higher importance in the rural counties of Oregon. The two other largest export-oriented industries in rural Oregon include agriculture/food processing and logging/wood products.
- According to a study from 2016, the average overnight visitor spends [\\$147](#) per day.
- In 2018, a total of [29.1 million](#) overnight visitors traveled to Oregon destinations.



Experience Central Oregon's spectacular geography via the Cascade Lakes Scenic Byway, where 150 lakes demonstrate a fascinating history of volcanism and glaciation.



Map Key:

Asterisk denotes an All-American Road.

— National Scenic Byways in Oregon:

- [Cascade Lakes Scenic Byway](#) (1)
- [Hells Canyon Scenic Byway](#) (2)*
- [Historic Columbia River Highway](#) (3)*
- [McKenzie Pass-Santiam Pass Scenic Byway](#) (4)
- [Mt. Hood Scenic Byway](#) (5)
- [Outback Scenic Byway](#) (6)
- [Pacific Coast Scenic Byway](#) (7)*
- [Rogue-Umpqua Scenic Byway](#) (8)
- [Volcanic Legacy Scenic Byway](#) (9)*
- [West Cascades Scenic Byway](#) (10)

— State Scenic Byways in Oregon:

- [Alesia River Back Country Byway](#) (11)
- [Aufderheide Scenic Byway](#) (12)
- [Blue Mountain Scenic Byway](#) (13)
- [Charleston To Bandon Tour Route](#) (14)
- [Christmas Valley Back Country Byway](#) (15)
- [Cottage Grove Covered Bridge Tour Route](#) (16)
- [Cow Creek Tour Route](#) (17)
- [Diamond Loop Tour Route](#) (18)
- [East Steens Tour Route](#) (19)
- [Elkhorn Scenic Byway](#) (20)
- [Emigrant Trail](#) (21)

- [Galice to Hellgate Back Country Byway](#) (22)
- [Grande Tour Route](#) (23)
- [Grave Creek to Marial Back Country Byway](#) (24)
- [High Desert Discovery Scenic Byway](#) (25)
- [Journey Through Time Scenic Byway](#) (26)
- [Lakeview to Steens Mountain Back Country Byway](#) (27)
- [Lower Crooked River Back Country Byway](#) (28)
- [Lower Deschutes River Back Country Byway](#) (29)
- [Mary's Peak to Pacific Coast](#) (30)
- [McKenzie River Scenic Byway](#) (31)
- [Myrtle Creek-Canyonville Tour Route](#) (32)
- [Nestucca River Back Country Byway](#) (33)
- [Over the Rivers and Through the Woods](#) (34)
- [Quartzville Road Back Country Byway](#) (35)
- [Silver Falls Tour Route](#) (36)
- [Snake River-Mormon Basin Back Country Byway](#) (37)
- [South Fork John Day River Back Country Byway](#) (38)
- [State of Jefferson Scenic Byway](#) (39)
- [Steens Loop Tour Route](#) (40)
- [Steens Mountain Back Country Byway](#) (41)
- [Trees to Sea Scenic Byway](#) (42)
- [Umpqua River Scenic Byway](#) (43)
- [Vineyard & Valley Tour Route](#) (44)