

New Mexico

The National Scenic Byways Program

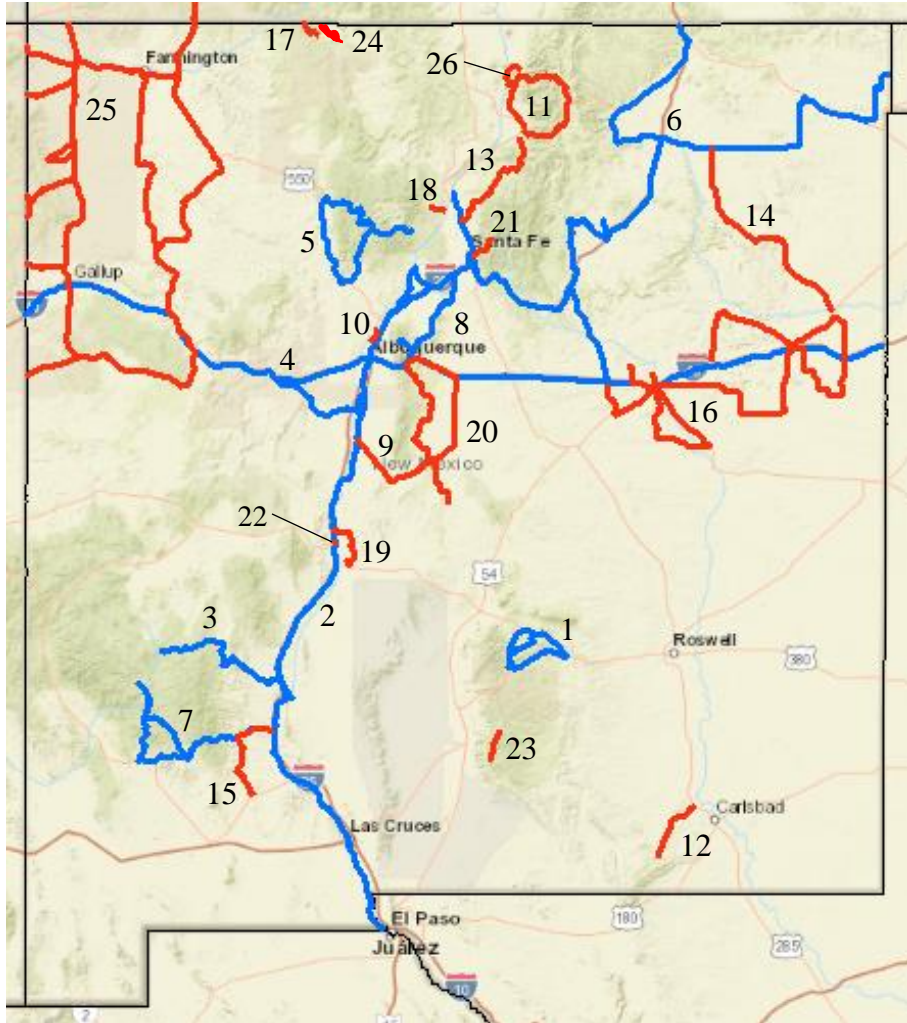
The National Scenic Byways Program, established by Congress in 1991, recognizes historic, scenic and culturally important roads, all of which promote economic development and tourism in communities around the country. New Mexico boasts 26 scenic byways in total, eight of which are National scenic byways while eighteen are State scenic byways. New Mexico enacted the state scenic byways program on July 31, 1998 in partnership with the New Mexico Department of Transportation (NMDOT) and the New Mexico State Highway. Additional funding has since come from SAFETEA- LU (2005).

Key points:

- New Mexico is home to 26 Scenic Byways, including 8 National Scenic Byways, and 18 State Scenic Byways.
- The [Abo Pass Trail](#) State Scenic Byway has been a byway for centuries- now, it is part of the Salinas Pueblo Missions National Monument, which can be visited along the byway.
- [El Camino Real](#) National Scenic Byway is the country's oldest and most used "highway"- The Camino Real brought European colonists to New Spain 22 years before the pilgrims arrived at Plymouth Rock.
- El Camino Real National Scenic Byway stretches over 600 miles through New Mexico and both Northern and Southern California.
- A recent National Scenic Byway Foundation survey showed that 44 state scenic byways in 24 states are prepared to seek designation as a National Scenic Byway.



The Trail of the Mountains Spirits Scenic Byway offers breathtaking views of Gila Hot Springs and the Gila Cliff Dwellings National Monument.



Scenic Byways in New Mexico

Map Key:

The numbers following each byway name below match with the respective byway's numbered location on the map.

National Scenic Byways in New Mexico:

State Scenic Byways in New Mexico:

- [Billy the Kid Trail](#) (1)
- [El Camino Real](#) (2)
- [Geronimo Trail Scenic Byway](#) (3)
- [Historic Route 66](#) (4)
- [Jemez Mountain Trail](#) (5)
- [Santa Fe Trail](#) (6)
- [Trail of the Mountains Spirits Scenic Byway](#) (7)
- [Turquoise Trail](#) (8)

- [Abo Pass Trail](#) (9)
- [Corrales Road Scenic Byway](#) (10)
- [Enchanted Circle Scenic Byway](#) (11)
- [Guadalupe Back Country Byway](#) (12)
- [High Road to Taos](#) (13)
- [La Frontera del Llano](#) (14)
- [Lake Valley Back Country Byway](#) (15)
- [Mesalands Scenic Byway](#) (16)
- [Narrow Gauge Scenic Byway](#) (17)

- [Puye Cliffs Scenic Byway](#) (18)
- [Quebradas Back Country Byway](#) (19)
- [Salt Missions Trail](#) (20)
- [Santa Fe National Forest Byway](#) (21)
- [Socorro Historical District Byway](#) (22)
- [Sunspot Scenic Byway](#) (23)
- [Tracks Across Borders](#) (24)
- [Trail of the Ancients](#) (25)
- [Wild Rivers Back Country Byway](#) (26)