

# Montana

## The National Scenic Byways Program

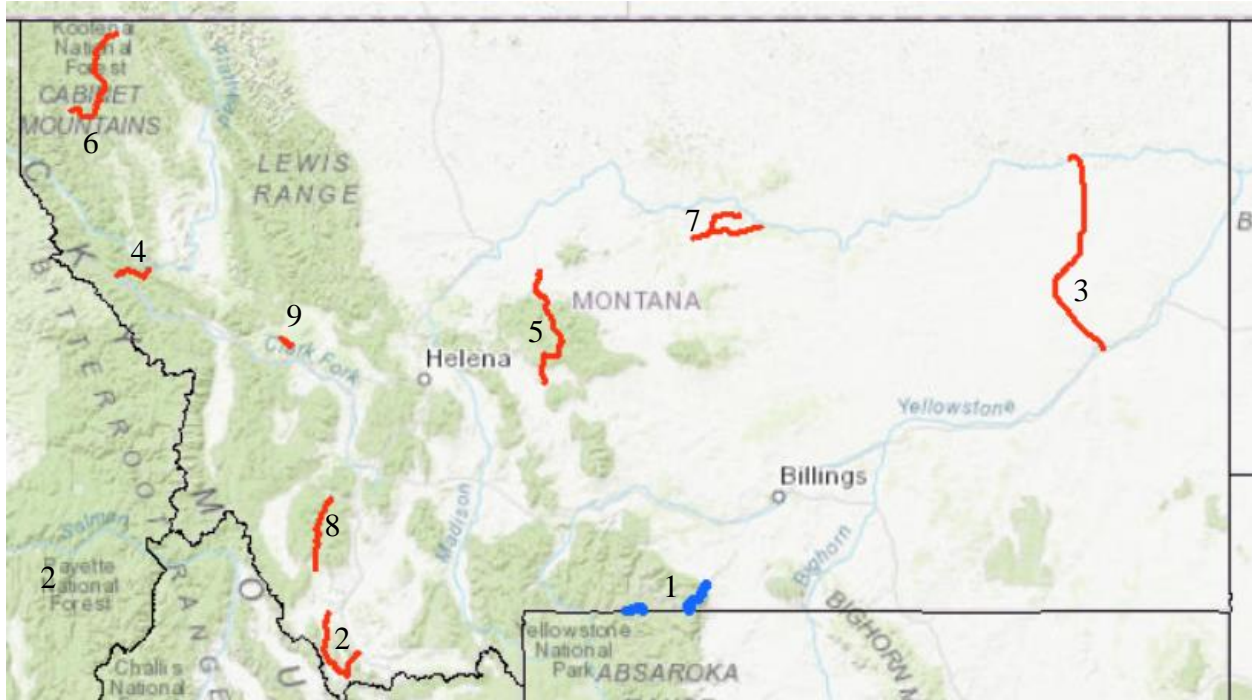
The National Scenic Byways Program, established by Congress in 1991, recognizes historic, scenic and culturally important roads, all of which promote economic development and tourism in communities. Montana is home to two Scenic Byways, one of which—Beartooth Highway—has been designated as a National Scenic Byway and an All-American Road, which is the gold-standard of Scenic Byways. Montana’s Beartooth highway provides dramatic views of the Beartooth Mountain Range and provides access to Yellowstone through its northeast entrance. Amongst framing the natural beauty of Montana, the proximity and connection to both the Beartooth Mountain Range and Yellowstone National Park make the Beartooth Highway a destination, and a quintessential asset for many towns in its adjacency. As Montana’s natural beauty attracts visitors from around the globe and around the country, which only increases the significance to Montana’s Scenic Byways to local economies and their development.

Key points:

- Montana is home to 1 National Scenic Byway and 8 State Scenic Byways.
- Nonresident visitors to Montana spent about [\\$3.27 billion](#) in the state which directly and indirectly supports \$5.28 billion in state economic activity.
- The travel and tourism industry supported [53,380](#) jobs in the state and \$1.6 billion in associated income.
- The Montana counties that encompass Yellowstone saw [\\$917 million](#) in nonresident spending, and Beartooth Highway’s unparalleled access to the park is integral to burgeoning economies in the area



*Consistently rated one of the most beautiful drives in America, Beartooth Highway offers unparalleled alpine views.*



## *Scenic Byways in Montana*

### National Scenic Byways in Montana:

[Beartooth Highway](#) (1)\*

### State Scenic Byways in Montana:

[Big Sheep Creek Backcountry Byway](#) (2)

[Big Sky Backcountry Byway](#) (3)

[Garnet Backcountry Byway](#) (4)

[Kings Hill Scenic Byway](#) (5)

[Lake Koocanusa Scenic Byway](#) (6)

[Missouri Breaks Backcountry Byway](#) (7)

[Pioneer Mountains Scenic Byway](#) (8)

[St. Regis - Paradise Scenic Byway \(aka Clark Fork Scenic Drive\)](#) (9)

\*Asterisk denotes an All-American Road.