

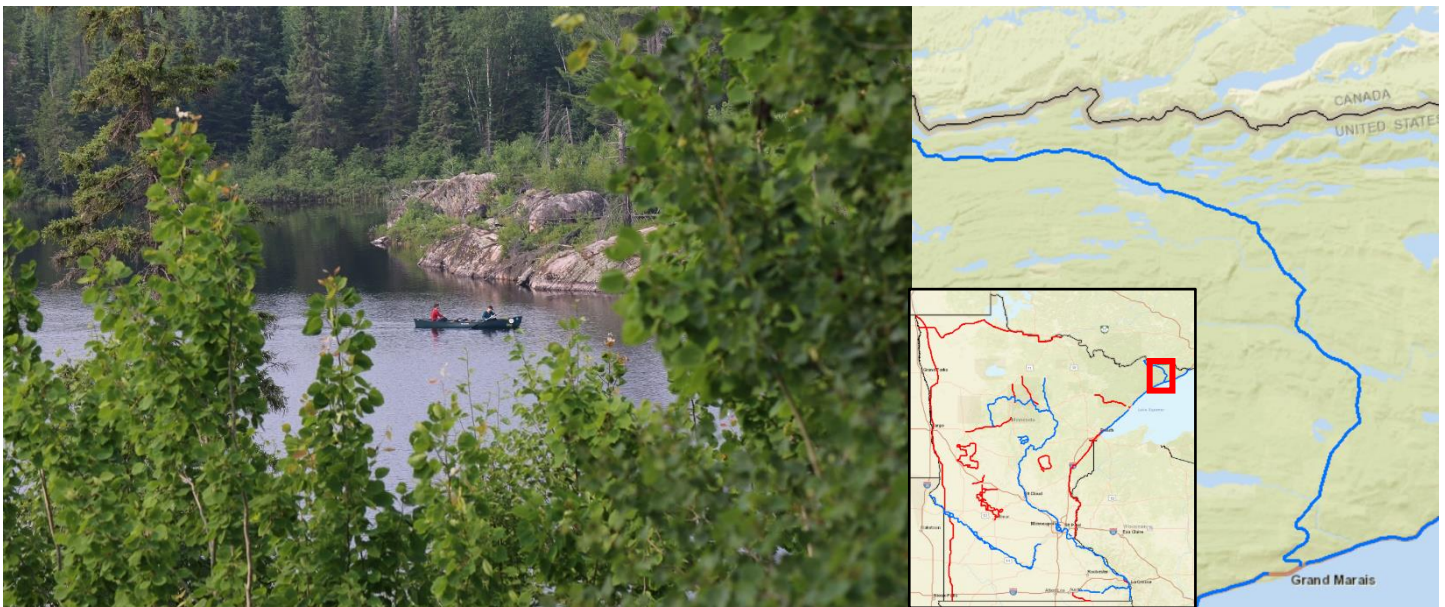
Minnesota

The National Scenic Byways Program

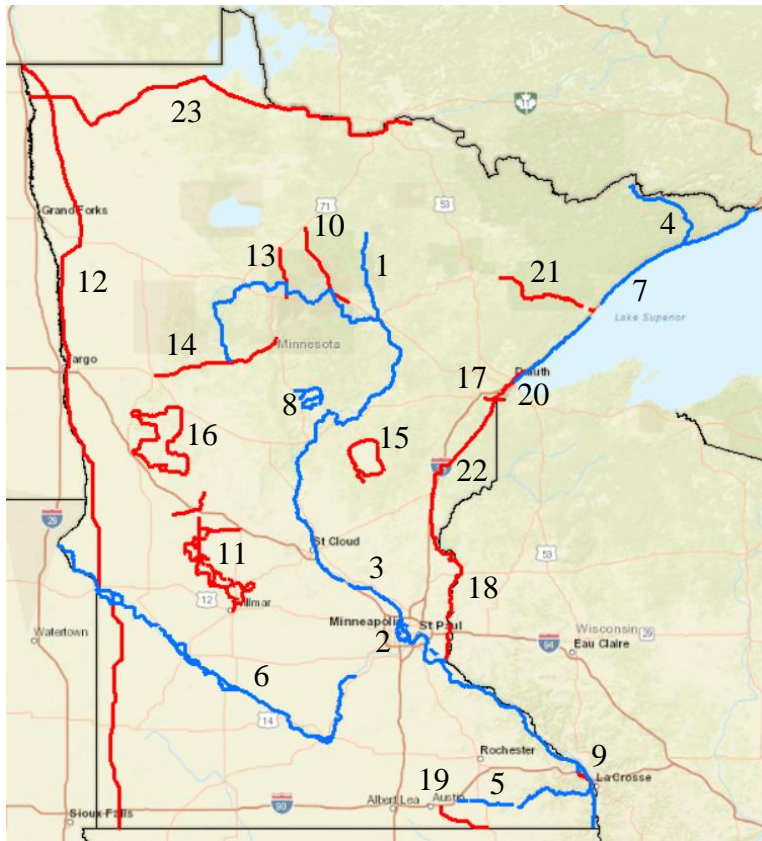
The [Minnesota Scenic Byways Commission](#) was created and established in 1992 by the Department of Transportation, Department of Natural Resources, the Minnesota Historical Society, and the Department of Tourism. The main goal of the program enactment was to increase economic growth via tourism in communities through which byways run. The [program](#) has now been functioning for over 20 years. The National Scenic Byways Program, established by Congress in 1991, recognizes historic, scenic and culturally important roads, all of which promote economic development and tourism in communities around the U.S. Scenic byways have successfully competed for over [173](#) projects from 1992-2012, and such projects have totaled over [\\$17 million dollars](#).

Key points:

- Minnesota is home to 23 Scenic Byways, including 8 National Scenic Byways and 15 State Scenic Byways.
- A [2010 study](#) by the University of Minnesota found that the state's Paul Bunyan Scenic Byway generated nearly \$22 million in visitor spending annually.
- During the Transportations Alternatives Program, the Minnesota Scenic Byways program applied for and was [awarded \\$6,052,781](#) for an additional 15 projects.
- The Minnesota Scenic Byways program asked for nominations starting in 1994, and since then has covered 22 projects totaling in [2,948 miles](#) across the state.



The Gunflint Trail Scenic Byway offers travelers gorgeous views and numerous recreational activities in the Superior National Forest.



Map Key:

The numbers following each byway name below match with the respective byway's numbered location on the map.

Scenic Byways in Minnesota

National Scenic Byways in Minnesota:

- [Edge of Wilderness](#) (1)
- [Grand Rounds Scenic Byway](#) (2)
- [Great River Road](#) (3)
- [Gunflint Trail Scenic Byway](#) (4)
- [Historic Bluff Country Scenic Byway](#) (5)
- [Minnesota River Valley Scenic Byway](#) (6)
- [North Shore Scenic Drive](#) (7)*
- [Paul Bunyan Scenic Byway](#) (8)

State Scenic Byways in Minnesota:

- [Apple Blossom Drive](#) (9)
- [Avenue of Pines](#) (10)
- [Glacial Ridge Trail](#) (11)

- [Historic Highway 75 King of Trails Scenic Byway](#) (12)
- [Lady Slipper Scenic Byway](#) (13)
- [Lake Country Scenic Byway](#) (14)
- [Lake Mille Lacs Scenic Byway](#) (15)
- [Otter Trail Scenic Byway](#) (16)
- [Rushing Rapids Parkway](#) (17)
- [Saint Croix Scenic Byway](#) (18)
- [Shooting Star Scenic Byway](#) (19)
- [Skyline Drive Scenic Byway](#) (20)
- [Superior National Forest Scenic Byway](#) (21)
- [Veterans Evergreen Memorial Drive](#) (22)
- [Waters of the Dancing Sky Scenic Byway](#) (23)

Asterisk denotes an All-American Road.