

## Indiana

### The National Scenic Byways Program

The National Scenic Byways Program, established by Congress in 1991, recognizes historic, scenic and culturally important roads and promotes tourism and economic development in nearby communities. Indiana is home to three National Scenic Byways, including the Historic National Road, which has also received the distinction of being designated an All-American Road in 2002—the gold standard for National Scenic Byways. The Historic National Road is joined by the Ohio River Scenic Byway, which was one of the original 14 Scenic Byways in the entire country and was designated as a State Scenic Byway in 1992 with the passage of [H.R. 47](#) in the Indiana House of Representatives. The affinity for Scenic Byways in Indiana continues to grow, as in June of 2018, a new segment of State Road 256 was added as a State Scenic Byway by an [Order of the Commissioner](#) of the Indiana Department of Transportation. [The State Department of Transportation](#) has continued to investigate ways that they can comply with requirements to elevate some of their State Scenic Byways to meet federal standards.

Key points:

- Indiana is home to 11 Scenic Byways, including 3 National Scenic Byways and 8 State Scenic Byways.
- According to a recent [study](#), Indiana saw tens of millions of visitors spend \$12.7 billion in Indiana, which generated \$1.4 billion in State and Local Tax revenue.
- Indiana’s Scenic Byways have become a destination for visitors to the state and their presence in and around towns and attractions throughout have contributed nearly [200,000](#) jobs.
- The money spent on tourism and travel in the state saves Hoosiers nearly [\\$600](#) per household in state and local taxes.



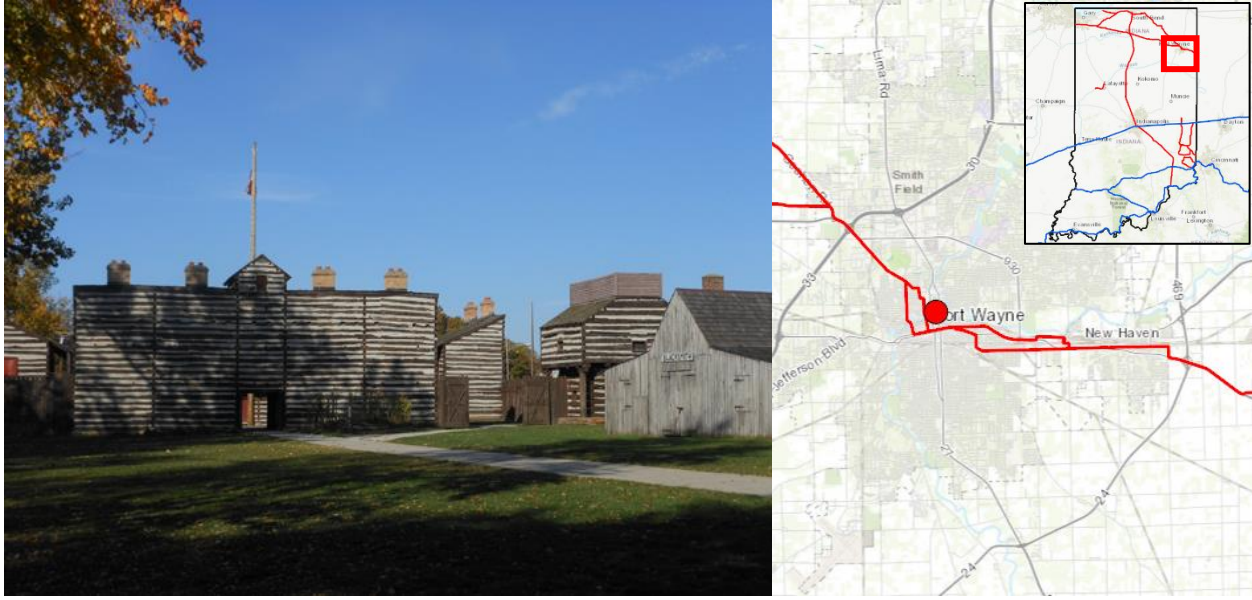
*Scenic Byways in Indiana*

#### — National Scenic Byways in Indiana:

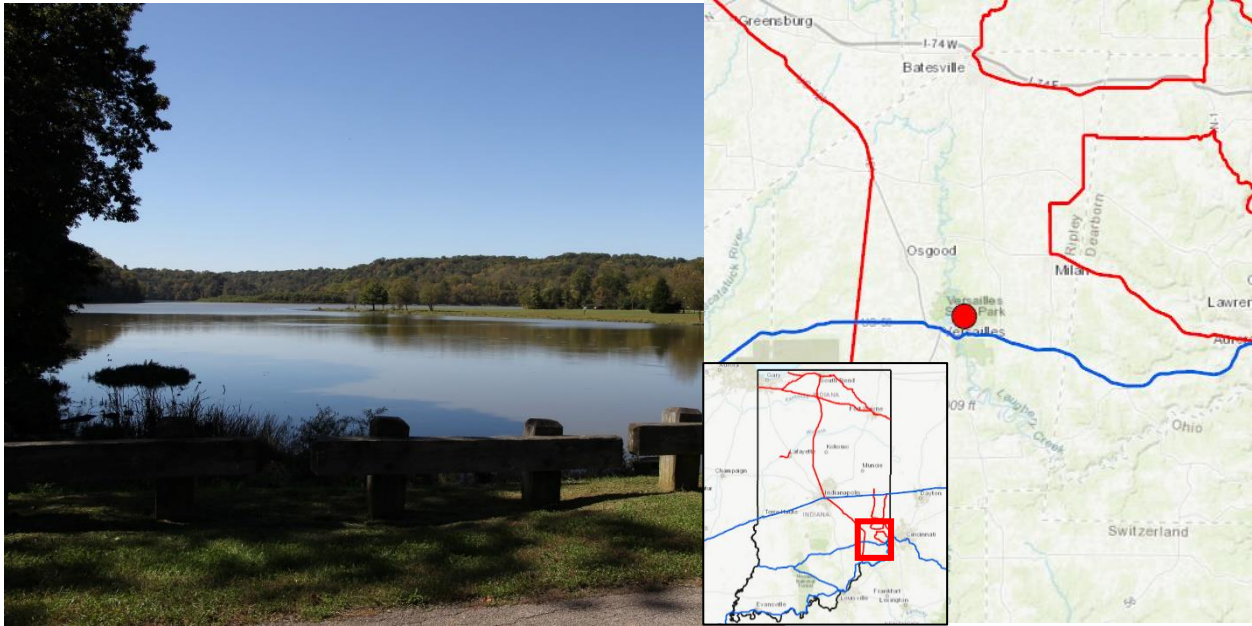
- [Historic National Road](#) (1)
- [Indiana’s Historic Pathways](#) (2)
- [Ohio River Scenic Byway](#) (3)

#### — State Scenic Byways in Indiana:

- [Dearborn Ripley Loop](#) (4)
- [East Fork Loop](#) (5)
- [Historic Michigan Road Byway](#) (6)
- [Indiana Lincoln Highway Historic Byway](#) (7)
- [Ohio River Scenic Byway Extension](#) (8)
- [Oldenburg Batesville Loop Road](#) (9)
- [Wabash River Scenic Byway](#) (10)
- [Whitewater Canal Scenic Byway](#) (11)



*Historic Old Fort in Fort Wayne is one of the many landmarks located along Indiana Lincoln Highway Historic Byway.*



*Versailles State Park, a mile from the Historic National Road, attracts locals and tourists alike.*