

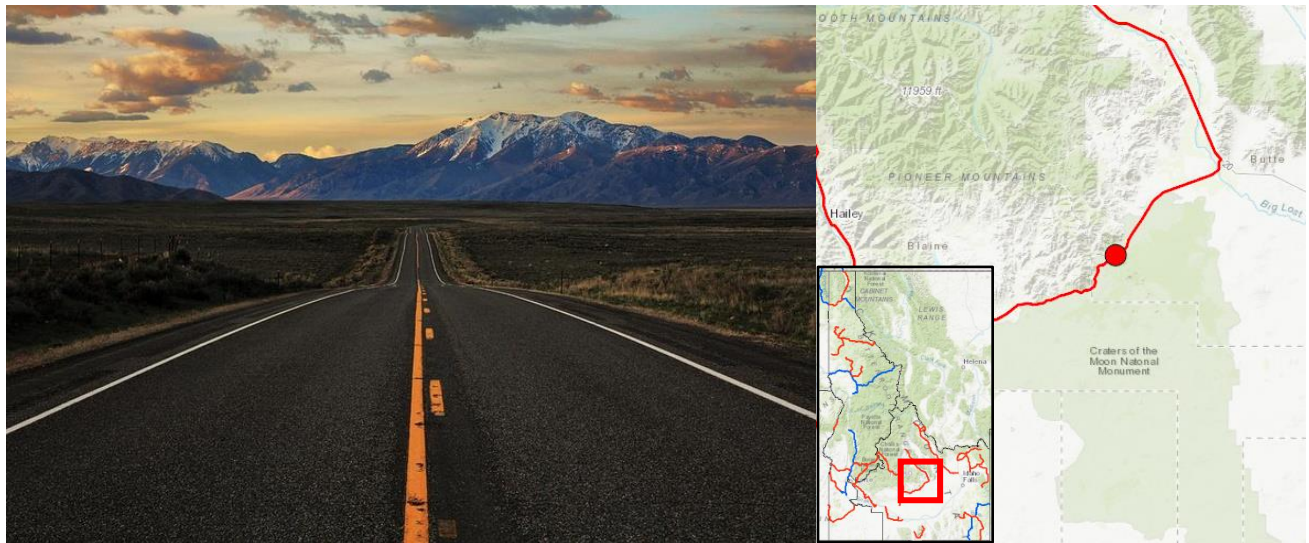
Idaho

The National Scenic Byways Program

The National Scenic Byways Program, established by Congress in 1991, recognizes historic, scenic, and culturally important roads and promotes tourism and economic development in nearby communities. The Idaho state scenic byways program started over a decade earlier, in 1977. The Idaho Transportation Department is the main administrator for the program, but it is also guided by the Idaho Byways Advisory Committee which includes state and national agency representatives, local business leaders, and community members. Byway designation must be initiated and supported by local communities. In 2013, the Idaho Transportation Department partnered with the Idaho Department of Commerce to produce two episodes for the Idaho Public Television program “Outdoor Idaho” on the state’s abundant scenic byways.

Key points:

- Idaho is home to 6 National Scenic Byways and 26 State Scenic Byways.
- Idaho’s scenic byways connect many outdoor recreation areas across the state, including National Parks and US Forest Service Lands. Visitors spent an estimated \$37.4 million in local gateway regions while visiting federal lands in Idaho

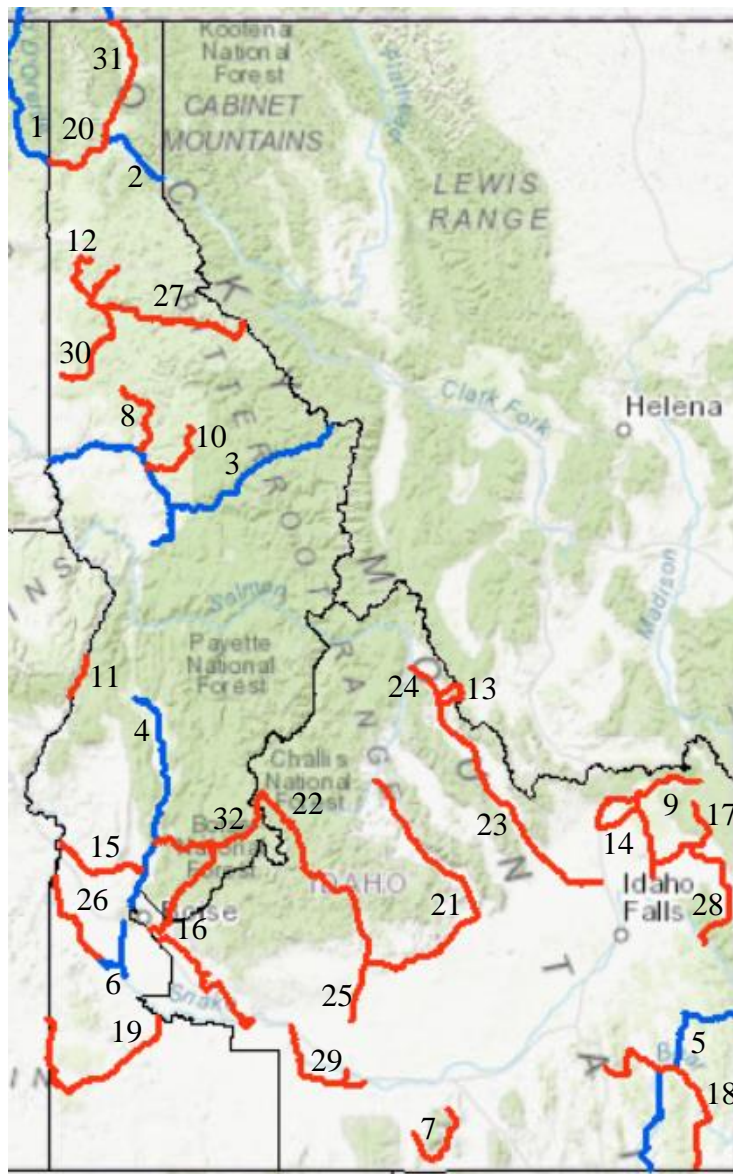


Peaks to Craters Scenic Byway, 140 miles long, offers stunning views of the surrounding peaks and valleys.

Map Key:

The numbers following each byway name below match with the respective byway's numbered location on the map.

Asterisk denotes an All-American Road.



Scenic Byways in Idaho

National Scenic Byways in Idaho:

- [International Selkirk Loop \(1\)*](#)
- [Northwest Passage Scenic Byway \(2\)*](#)
- [Payette River Scenic Byway \(3\)](#)
- [Pend Oreille Scenic Byway \(4\)](#)
- [Pioneer Historic Byway \(5\)](#)
- [Western Heritage Historic Byway \(6\)](#)

State Scenic Byways in Idaho:

- [City of Rocks Back Country Byway \(7\)](#)
- [Elk River Back Country Byway \(8\)](#)
- [Fort Henry Historic Byway \(9\)](#)
- [Gold Rush Historic Byway \(10\)](#)
- [Hells Canyon Scenic Byway \(11\)](#)
- [Lake Coeur d'Alene Scenic Byway \(12\)](#)
- [Lewis and Clark Back Country Byway \(13\)](#)
- [Lost Gold Trails Loop \(14\)](#)

- [Lower Payette River Heritage Byway \(15\)](#)
- [Main Oregon Trail Back Country Byway \(16\)](#)
- [Mesa Falls Scenic Byway \(17\)](#)
- [Oregon Trail-Bear Lake Scenic Byway \(18\)](#)
- [Owyhee Uplands Back Country Byway \(19\)](#)
- [Panhandle Historic Rivers Passage Scenic Byway \(20\)](#)
- [Peaks to Craters Scenic Byway \(21\)](#)
- [Ponderosa Pine Scenic Byway \(22\)](#)
- [Sacajawea Historic Byway \(23\)](#)
- [Salmon River Scenic Byway \(24\)](#)
- [Sawtooth Scenic Byway \(25\)](#)
- [Snake River Canyon Scenic Byway \(26\)](#)
- [St. Joe River Scenic Byway \(27\)](#)
- [Teton Scenic Byway \(28\)](#)
- [Thousand Springs Scenic Byway \(29\)](#)
- [White Pine Scenic Byway \(30\)](#)
- [Wild Horse Trail Scenic Byway \(31\)](#)
- [Wildlife Canyon Scenic Byway \(32\)](#)