

## Connecticut

### The National Scenic Byways Program

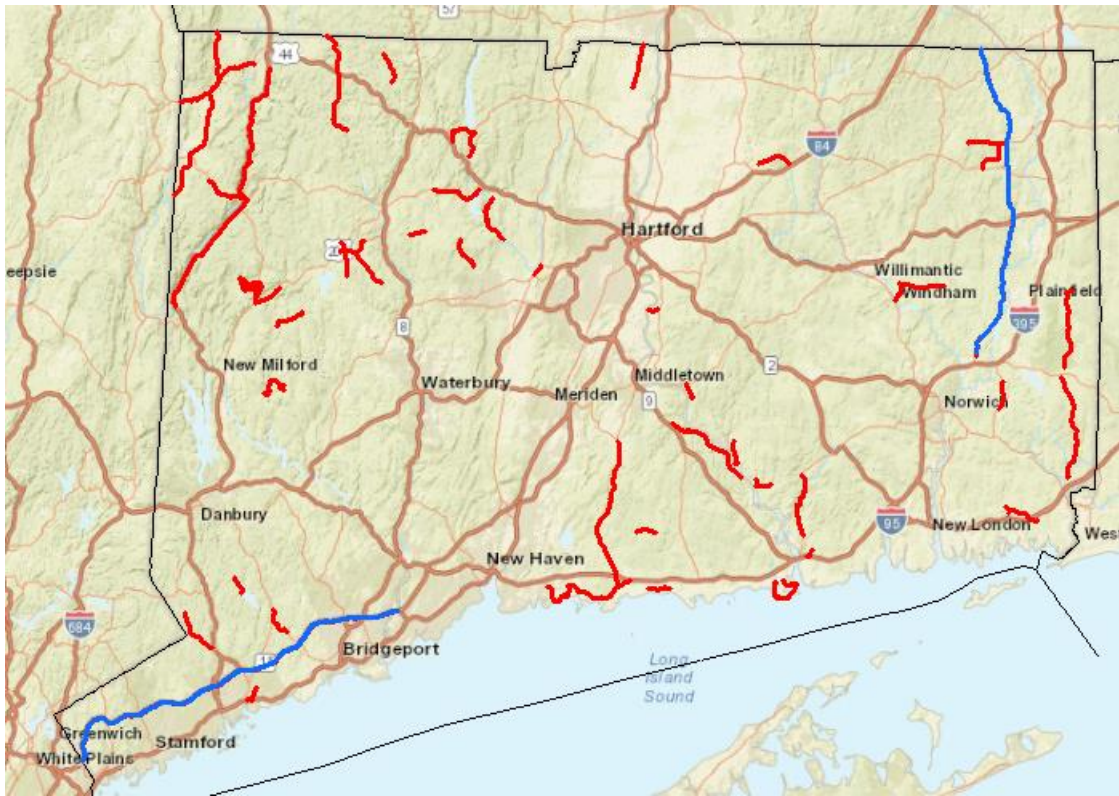
The National Scenic Byways Program, established by Congress in 1991, recognizes historic, scenic and culturally important roads, all of which promote economic development and tourism in communities around the country. Connecticut is home to an astounding fifty-three Scenic Byways, two of which are part of the National Scenic Byways Program—the Merritt Parkway and Connecticut State Route 169. The Merritt Parkway is renowned for its brilliantly integrated Art Deco and Art Modern bridges, with stylistic influences reaching back to the 1920's and 1930's as well as its magnificent foliage in the fall. Conversely, Connecticut SR 169—on the opposite end of the state—winds through some of the last vestiges of untouched and unspoiled New England, from its historic buildings to glacial deposits to the small towns that dot the Route, it truly encapsulates some of Connecticut's most beautiful sites. By revealing the most significant characteristics of the state, Connecticut's scenic byways provide an attractive experience for visitors, greatly benefitting the regional tourism sector.

Key points:

- Connecticut is home to 2 National Scenic Byways and 51 State Scenic Byways.
- A 2017 study showed that tourism accounted for [\\$9.3 billion](#) in spending that year.
- Tourism sustains the jobs of [123,521](#) residents and paid them \$5.4 billion.
- In state and local taxes, tourism generated [\\$960 million](#) in 2017 alone. That saves residents of the state over \$700 a year.
- The state and local tax revenue in [2017](#) was enough to fund capital budgets for the entire state transportation and education and libraries programs.



*Intricately designed, commuters can enjoy lush fall colors and green forested hills along the Merritt Parkway.*



## *Scenic Byways in Connecticut*

### — National Scenic Byways in Connecticut:

[Connecticut State Route 169](#)

[Merritt Parkway](#)

### — State Scenic Byways in Connecticut:

<a href="#"><u>Route 1</u></a>	<a href="#"><u>Route 63</u></a>	<a href="#"><u>Route 151</u></a>	<a href="#"><u>Route 272</u></a>
<a href="#"><u>Route 4</u></a>	<a href="#"><u>Route 67</u></a>	<a href="#"><u>Route 154</u></a>	<a href="#"><u>Route 317</u></a>
<a href="#"><u>Route 7</u></a>	<a href="#"><u>Route 69</u></a>	<a href="#"><u>Route 156</u></a>	<a href="#"><u>Route 318</u></a>
<a href="#"><u>Route 10</u></a>	<a href="#"><u>Route 74</u></a>	<a href="#"><u>Route 160</u></a>	<a href="#"><u>Route 565</u></a>
<a href="#"><u>Route 14</u></a>	<a href="#"><u>Route 75</u></a>	<a href="#"><u>Route 164</u></a>	<a href="#"><u>SR 478</u></a>
<a href="#"><u>Route 14A</u></a>	<a href="#"><u>Route 77</u></a>	<a href="#"><u>Route 179</u></a>	<a href="#"><u>SSR 431</u></a>
<a href="#"><u>Route 17</u></a>	<a href="#"><u>Route 80</u></a>	<a href="#"><u>Route 181</u></a>	
<a href="#"><u>Route 27</u></a>	<a href="#"><u>Route 82</u></a>	<a href="#"><u>Route 183</u></a>	
<a href="#"><u>Route 33</u></a>	<a href="#"><u>Route 97</u></a>	<a href="#"><u>Route 195</u></a>	
<a href="#"><u>Route 41</u></a>	<a href="#"><u>Route 109</u></a>	<a href="#"><u>Route 202</u></a>	
<a href="#"><u>Route 44</u></a>	<a href="#"><u>Route 118</u></a>	<a href="#"><u>Route 203</u></a>	
<a href="#"><u>Route 45</u></a>	<a href="#"><u>Route 136</u></a>	<a href="#"><u>Route 219</u></a>	
<a href="#"><u>Route 49</u></a>	<a href="#"><u>Route 146</u></a>	<a href="#"><u>Route 234</u></a>	
<a href="#"><u>Route 53</u></a>	<a href="#"><u>Route 148</u></a>	<a href="#"><u>Route 244</u></a>	
<a href="#"><u>Route 58</u></a>	<a href="#"><u>Route 149</u></a>	<a href="#"><u>Route 254</u></a>	

### **Map Facts:**

Connecticut is home to 53 scenic byways (2 National & 51 State) comprising of 314.39 miles of roads across the state.