

Arizona

The National Scenic Byways Program

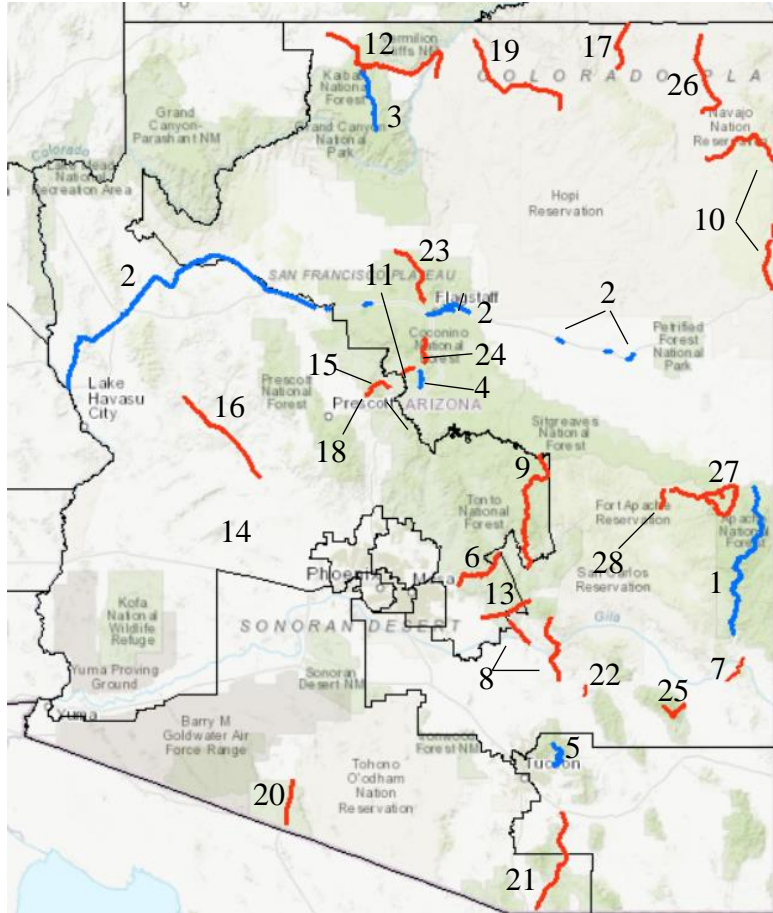
The National Scenic Byways Program, established by Congress in 1991, recognizes historic, scenic and culturally important roads and promotes tourism and economic development in nearby communities. In 1982, the state of Arizona enacted into law [ARS 41-512 through ARS 41-518](#). These laws helped establish Arizona's Parkways, Historic and Scenic Roads Program, administered by the Arizona Department of Transportation ([ADOT](#)). The Parkways, Historic and Scenic Road Advisory Committee ([PHSRAC](#)) oversees the designation process and reviews byway request recommendations. Members are comprised of six members representing various counties appointed by the Arizona state governor, and five members from five state agencies. Arizona boasts 28 scenic byways, two of which are All-American Roads: Route 66 and the Red Rock Scenic Byway.

Key points:

- Arizona is home to 5 National Scenic Byways and 23 State Scenic Byways.
- Sedona, running through the Red Rock Scenic Byway, generated over [\\$10 million](#) on local tax dollars to services for residents.
- Grand Canyon National Park had a cumulative benefit to the local economy of over [\\$900 million](#).
- A recent National Scenic Byway Foundation survey showed that 44 state scenic byways in 24 states are prepared to seek designation as a National Scenic Byway.



Organ Pipe Cactus Parkway offers visitors access to astoundingly beautiful stretches of Arizona's southern desert.



Map Key:

The numbers following each byway name below match with the respective byway's numbered location on the map.

Scenic Byways in Arizona

National Scenic Byways in Arizona:

- [Coronado Trail National Scenic Byway](#) (1)
- [Historic Route 66](#) (2)*
- [Kaibab Plateau-North Rim National Scenic Byway](#) (3)
- [Red Rock Road](#) (4)*
- [Sky Island Parkway \(Catalina Highway\)](#) (5)

State Scenic Byways in Arizona:

- [Apache Trail Historic Road](#) (6)
- [Black Hills Backcountry Byway](#) (7)
- [Copper Corridor Scenic Road \(SR 77\)](#) (8)
- [Desert to Tall Pines Scenic Road](#) (9)
- [Diné Tah \(Among the People\) Scenic Road](#) (10)
- [Dry Creek Scenic Road](#) (11)
- [Fredonia-Vermillion Cliffs Scenic Road](#) (12)

- [Gila-Pinal Scenic Road](#) (13)
- [Harquahala Mountain Backcountry Byway](#) (14)
- [Jerome-Clarkdale-Cottonwood Historic Road](#) (15)
- [Joshua Forest Scenic Road](#) (16)
- [Kayenta-Monument Valley Scenic Road](#) (17)
- [Mingus Mountain Scenic Road](#) (18)
- [Naat'tsis'aan-Navajo Mountain Scenic Road](#) (19)
- [Organ Pipe Cactus Parkway](#) (20)
- [Patagonia-Sonoita Scenic Road](#) (21)
- [Rug Road](#) (22)
- [San Francisco Peaks Scenic Road](#) (23)
- [Sedona-Oak Creek Canyon Scenic Road](#) (24)
- [Swift Trail Parkway](#) (25)
- [Tse'nikani-Flat Mesa Rock Scenic Road](#) (26)
- [White Mountain Scenic Road](#) (27)
- [White River Scenic Road](#) (28)