

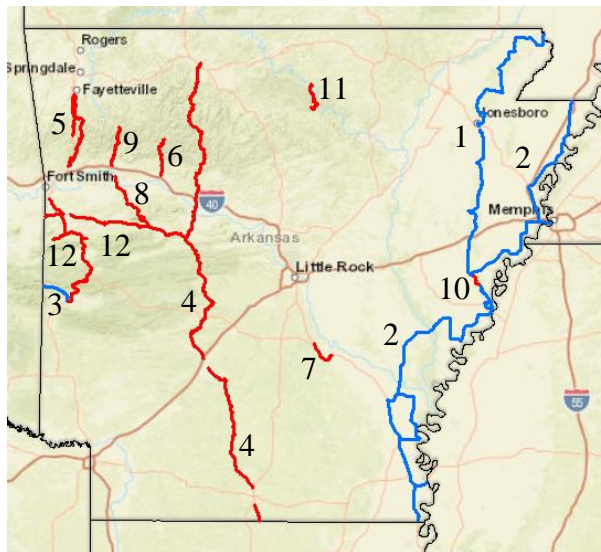
Arkansas

The National Scenic Byways Program

The National Scenic Byways Program, established by Congress in 1991, recognizes historic, scenic and culturally important roads, all of which promote economic development and tourism in communities around the country. Arkansas quickly established their own Scenic Byways Program, recognizing the state's scenic and historic routes. From Civil War Battlefields, regional wildlife and charming towns, Arkansas's Scenic Byways display the state's visual and cultural beauty. Arkansas is home to twelve scenic byways, three of which are federally designated including the expansive Great River Road. The Great River Road was established as a parkway alongside the Mississippi River and stretches 362 miles through Arkansas. Travelers can experience this impressive natural landmark while better understanding the Mississippi River's role in shaping the nation.

Key points:

- Arkansas boasts 3 National Scenic Byways and 9 State Scenic Byways.
- Travel and tourism are the second largest industry in Arkansas—behind only agriculture—and a University of Arkansas study shows that it contributes [\\$8.42 billion](#) to the state's GDP.
- The same study identifies roadways and the physical beauty of the state as some of the key drivers for the success of the industry.
- In 2015, travel expenditures saved Arkansas tax-payers [\\$511 million](#) in state and local taxes.



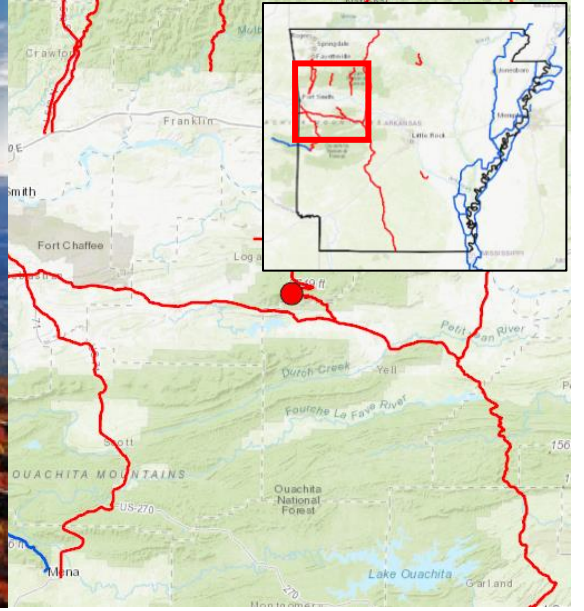
Scenic Byways in Arkansas

National Scenic Byways in Arkansas:

- [Crowley's Ridge Parkway](#) (1)
- [Great River Road](#) (2)
- [Talimena Scenic Drive](#) (3)

State Scenic Byways in Arkansas:

- [Arkansas Scenic 7 Byway](#) (4)
- [Boston Mountain Scenic Loop](#) (5)
- [Highway 21, Ozark Highlands Scenic Byway](#) (6)
- [Interstate 530](#) (7)
- [Mount Magazine Scenic Byway](#) (8)
- [Pig Trail Scenic Byway](#) (9)
- [St. Francis Scenic Byway](#) (10)
- [Sylamore Scenic Byway](#) (11)
- [West-Northwest Scenic Byway](#) (12)



Mount Magazine Scenic Byway offers access to a multitude of stunning hiking trails.



Arkansas 7 Scenic Byway, ranked one of the most scenic drives in America, offers stunning views of Arkansas' picturesque forests.