

Oregon

The National Scenic Byways Program

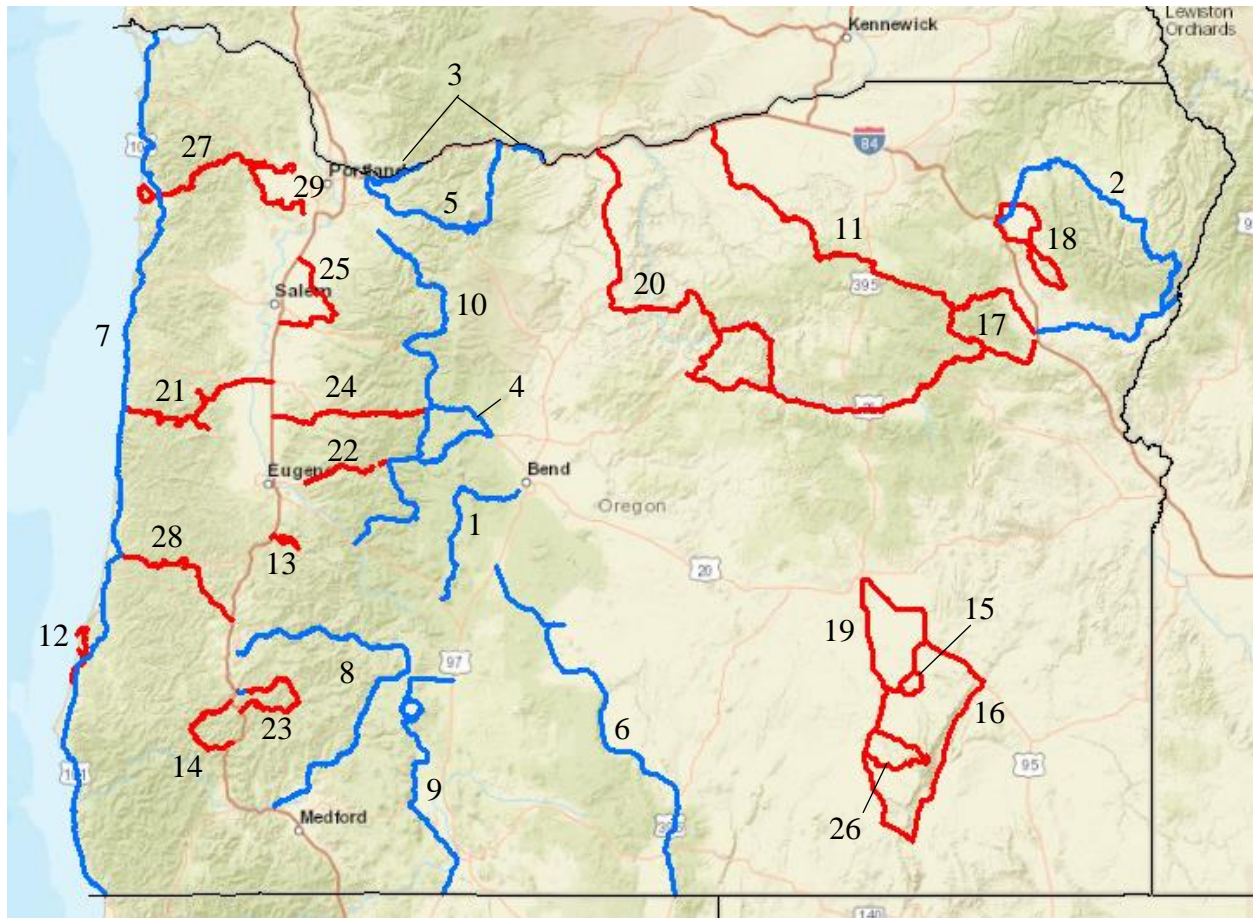
The National Scenic Byways Program, established by Congress in 1991, recognizes historic, scenic and culturally important roads, all of which promote economic development and tourism in communities around the U.S. The Scenic Byways in Oregon highlight a variety of breathtaking natural features, including lava flows, meadows, alpine lakes, and snow tipped peaks. The prevalence of American history attracts many visitors each year, as multiple of Oregon's Scenic Byways cross paths with the historic Oregon Trail, traveled by many famous frontiersmen such as Lewis and Clark and Kit Carson.

Key points:

- Oregon is home to 10 National Scenic Byways and 19 State Scenic Byways.
- A 2018 study found that in totality, the Oregon travel industry employed a total of 115,400 people.
- Research indicates that travel-generated employment serves a higher importance in the rural counties of Oregon. The two other largest export-oriented industries in rural Oregon include agriculture/food processing and logging/wood products.
- According to a study from 2016, the average overnight visitor spends \$147 per day.
- In 2018, a total of 29.1 million overnight visitors traveled to Oregon destinations.



Experience Central Oregon's spectacular geography via the Cascade Lakes Scenic Byway, where 150 lakes demonstrate a fascinating history of volcanism and glaciation.



Scenic Byways in Oregon

National Scenic Byways in Oregon:

- [Cascade Lakes Scenic Byway](#) (1)
- [Hells Canyon Scenic Byway](#) (2)*
- [Historic Columbia River](#) (3)*
- [McKenzie Pass-Santiam Pass Scenic Byway](#) (4)
- [Mt. Hood Scenic Byway](#) (5)
- [Outback Scenic Byway](#) (6)
- [Pacific Coast Scenic Byway](#) (7)*
- [Rogue-Umpqua Scenic Byway](#) (8)
- [Volcanic Legacy Scenic Byway](#) (9)*
- [West Cascades Scenic Byway](#) (10)

State Scenic Byways in Oregon:

- [Blue Mountain Scenic Byway](#) (11)
- [Charlestown to Bandon](#) (12)
- [Cottage Grove](#) (13)
- [Cow Creek](#) (14)
- [Diamond Loop](#) (15)

- [East Steens](#) (16)
- [Elkhorn Drive](#) (17)
- [Grande Tour](#) (18)
- [High Desert Discovery](#) (19)
- [Journey Through Time](#) (20)
- [Mary's Peak to Pacific Coast](#) (21)
- [McKenzie River Scenic Byway](#) (22)
- [Myrtle Creek-Canyonville](#) (23)
- [Over the Rivers and Through the Woods](#) (24)
- [Silver Falls](#) (25)
- [Steens Loop](#) (26)
- [Trees to Seas Scenic Byway](#) (27)
- [Umpqua River Scenic Byway](#) (28)
- [Vineyard & Valley](#) (29)

Map Key:

The numbers following each byway name above match with the respective byway's numbered location on the map. Asterisk denotes an All-American Road.